

Pennsylvania's Jobs Market 2001-2008: Trading Down in A Debt-Driven, Weak Economy

Dr. Charles W. McMillion
President & Chief Economist
MBG Information Services
Washington, DC

April 2008

Prepared for

The American Manufacturing Trade Action Coalition
910 16th Street, NW, Suite 760
Washington, DC 20006
Telephone: (202) 452-0866 Fax: (202) 452-0739

Pennsylvania's Employment 2001-2008: Trading Down in A Debt-Driven, Weak Economy

Dr. Charles W. McMillion

Over the business cycle from early-2001 to early-2008 household and federal government debt soared to unprecedented levels far worse even than the spike of debt stimulus during and after the Great Depression and World War II. Together, household and federal debt almost doubled over the past seven years, soaring by \$10.4 trillion to reach \$23.1 trillion, 64% larger than the entire Gross Domestic Product. This debt is up from 27% larger than GDP at the end of 2000 and the previous record of 38% larger than GDP reached in 1946. This is the basis for the debt crisis that now has plunged the US into a new and possibly severe recession.

Yet, even with this massive debt stimulus the US suffered -- by far -- it's weakest seven-year job growth since the demobilization from W.W. II. Record Current Account trade deficits totaling -\$4.3 trillion from 2001 to 2007, over -\$3 trillion in deficits for Manufactured goods alone. These enormous commercial losses reflect the loss of production and millions of manufacturing and other jobs in higher-wage industries exposed to global outsourcing and imports.

Pennsylvania added jobs over the past seven years at less than half the anemic rate in the US as a whole; the 13th slowest job growth among the 50 states. Over the period the Commonwealth added a total of 94,200 jobs, 1.7% growth, while the US added a total of 5,587,000 for a seven-year increase of 4.2%. Yet because recessions are often longer and more severe in Pennsylvania than in the US as a whole, even the recent weak job growth was not as severe as the conditions the Commonwealth faced in the early-1980s and in much of the 1950s.

Record losses of production and jobs from trade deficits offset much of the job-creating effects of the recent, unprecedented debt stimulus. The trade deficit with China alone tripled over the past seven years, from -\$84 billion to -\$256 billion, doubling the number of US jobs lost to the China deficit to nearly two million in 2007 from one million in 2000. (Job losses doubled as trade losses tripled because of productivity increases.) Pennsylvania's job losses from the worsening trade deficits with China doubled from almost 40,000 in 2000 to near 80,000 in 2007, a loss of nearly -40,000 jobs over seven years.

As throughout the US, recent job losses in Pennsylvania are concentrated in highly productive, high wage manufacturing. Pennsylvania lost -207,300 manufacturing jobs over the past seven years, -24.3% of all its manufacturing jobs. This is a higher percentage of manufacturing jobs lost than the Commonwealth suffered in the early and mid-1980s as the US first experienced manufacturing trade deficits. These most recent losses are also considerably worse even than the record shattering manufacturing job losses in the US as a whole -- -19.7% or -3.36 million -- but ranks behind nine other states with even worse losses. The previous worst seven years of US manufacturing job losses was the loss of -14.6% of jobs in the World War II demobilization.

The loss of higher-wage jobs in manufacturing and in other sectors (almost certainly) caused household incomes to lose purchasing power in Pennsylvania and in the US for the first time during any business cycle since the Depression. The Census Bureau has not yet released household income

figures for 2007 but inflation-adjusted median incomes fell by -\$903 (-1.8%) in Pennsylvania and by -\$962 (-2.0%) for the entire US between 2000 and 2006. The purchasing power of median household incomes is thought to have stagnated or perhaps fallen slightly in 2007. That is, most households in Pennsylvania and thought the US entered the current 2008 recession with less real income than they had in 2000 and with far more debt.

Detailed compensation data illustrate that as throughout the country, far more than all of the new jobs generated in Pennsylvania by soaring recent debt, are in industries that do not face import competition, are not easily offshored, and do not export. That is, the Commonwealth's recent job growth in Health Care and Social Assistance is far greater than all net job growth. Add the new jobs in State and Local Governments and in Food Services and Drinking Places, and these three industries alone added twice as many jobs as all new jobs added in Pennsylvania. Importantly, the average (not median) annual compensation in Pennsylvania for jobs in Health Care and Social Assistance is -30.6% less than the average Manufacturing job; jobs in State and Local Governments pay -22.7% less and jobs in Food Services and Drinking Places pay -74.7% less.

Very few industries with annual compensation higher than in Manufacturing added jobs in Pennsylvania in recent years. Of those that did, few faced global competition or exported, and many appear closely related to the recent debt-fueled boom in housing and national security.

The city of Philadelphia was particularly hard-hit over the past seven years, losing -30,900 jobs, -4.5% of its total. Even adding Pennsylvania's suburban areas around Philadelphia, the greater metropolitan area added only 17,200 jobs in the past seven years, an increase of just 0.9%. The Pittsburgh area lost -10,200 jobs, -0.9%, while the Williamsport and Erie areas also lost jobs; -4.2% and -1.1%, respectively. The metropolitan areas of Scranton/Wilkes/Barre and Reading also had job growth slower than for the Commonwealth as a whole, increasing by a total of only 0.7% and 1.6%, respectively, over the past seven years.

Areas creating jobs faster than Pennsylvania's average, include York-Hanover (6.4%,) Lancaster (6.3%,) Allentown-Bethlehem-Easton (5.1%,) Harrisburg-Carlisle (4.1%,) Altoona (3.3%,) State College (2.9%) and Johnstown (2.9%.) But no area sustained seven years of job growth even at the 1% per year rate necessary to accommodate minimum population growth. Yet the sharp decline in Manufacturing jobs -- ranging from a high of -46.9% in State College to a low of -17.8% in York-Hanover -- will have important economic effects in the current, new recession and beyond.

Jobs and income data tell only part of Pennsylvania's past seven year economic story. Another key part of the story is the unprecedented levels of household and federal debt stimulus that played a vital role in moderating the effects of import competition, outsourcing and job loss. With the soaring engine of household debt now sputtering and debt service payments rising, strong industrial and trade policies seem urgently needed to assure Pennsylvania continues to prosper.

Charles W. McMillion, president and chief economist of MBG Information Services is a former associate director and professor in the Johns Hopkins University policy institute and a former contributing editor of the Harvard Business Review. MBG Information Services is a business information, analysis and forecasting firm based in Washington, DC.
202.544.6490 or on the web at [Http://mbginfosvcs.com](http://mbginfosvcs.com)

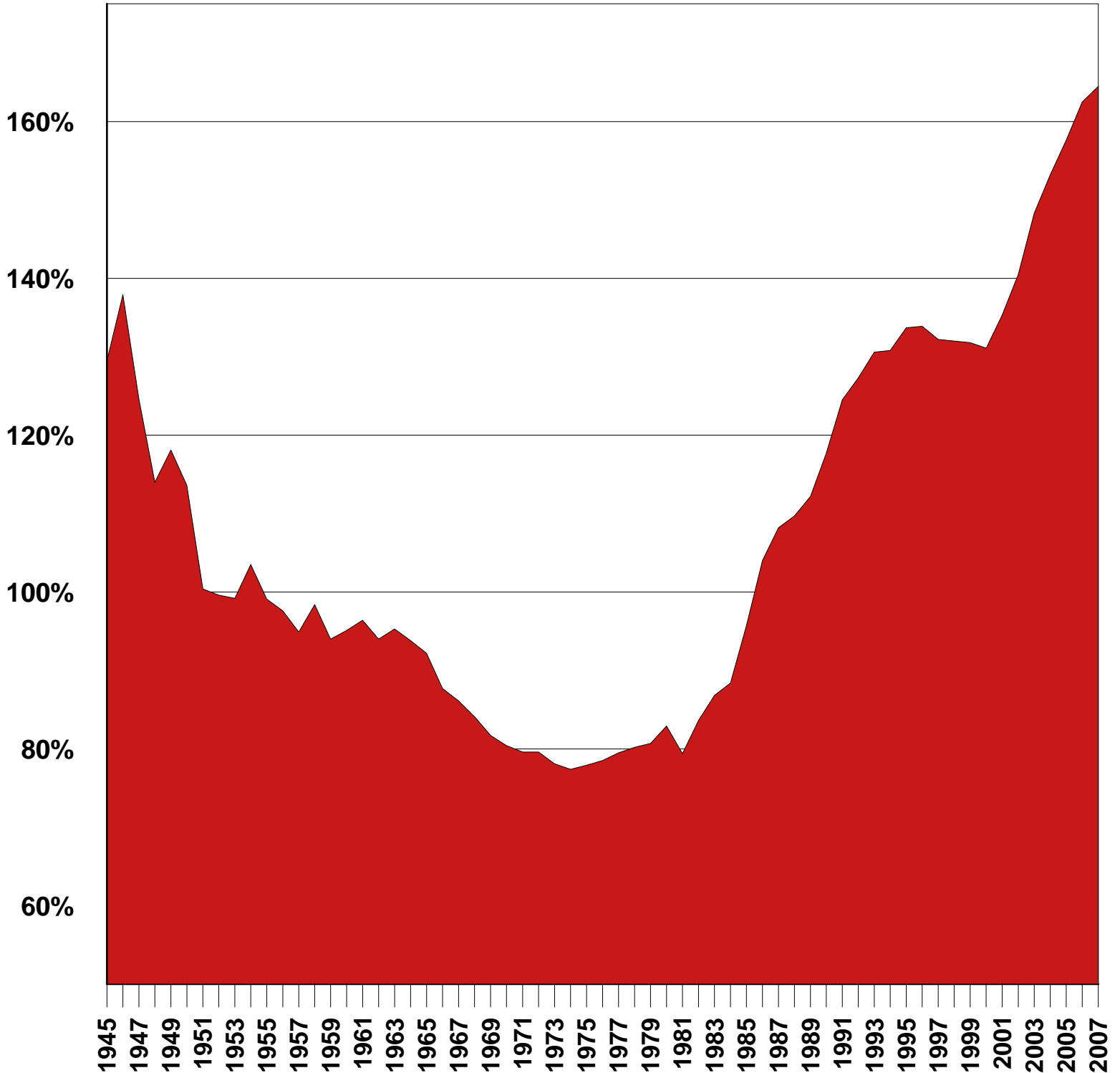
Table of Contents:

Page

1-2	Summary of Pennsylvania findings
4	Household and Federal Debt as Percent of GDP: 1945 to 2007
5	US Job Growth Over Seven-Year Periods Ending 1950 to 2008
6	US Quarterly Balances in all Current Accounts: 1960 to 2007
7	Pennsylvania's Job Growth Over Seven-Year Perios Ending 1948 to 2008
8	The Recent Jobs Record in the 50 States: 2001 to 2008
9	The 50 States and the Cost of Jobs to the China Trade Deficits: 2000 to 2007
10	The 50 States and Seven Years of Record Losses in Manufacturing Jobs: 2001 to 2008
11	The 50 States and The Median Income of Households: 2000 to 2006
12-13	Pennsylvania: Replacing High Wage with Low Wage Jobs: 2001 to 2006
14-15	(Rank-ordered) Pennsylvania: Replacing High Wage with Low Wage Jobs: 2001 to 2006
17-18	Pennsylvania's industries and job gains/losses; 2001 to 2008
19	Allentown-Bethlehem-Easton industries and job gains/losses; 2001 to 2008
20	Altoona and Erie industries and job gains/losses; 2001 to 2008
21	Harrisburg-Carlisle industries and job gains/losses; 2001 to 2008
22	Johnstown and Lancaster industries and job gains/losses; 2001 to 2008
23	The City of Philadelphia industries and job gains/losses; 2001 to 2008
24	Metro Philadelphia (Pennsylvania portion) industries and job gains/losses; 2001 to 2008
25	Pittsburgh industries and job gains/losses; 2001 to 2008
26	Reading industries and job gains/losses; 2001 to 2008
27	Scranton-Wilkes-Barre industries and job gains/losses; 2001 to 2008
28	State College and Williamsport industries and job gains/losses; 2001 to 2008
29	York-Hanover industries and job gains/losses; 2001 to 2008
30	APPENDIX: Definitions of Pennsylvania Metropolitan Statistical Areas (MSAs)

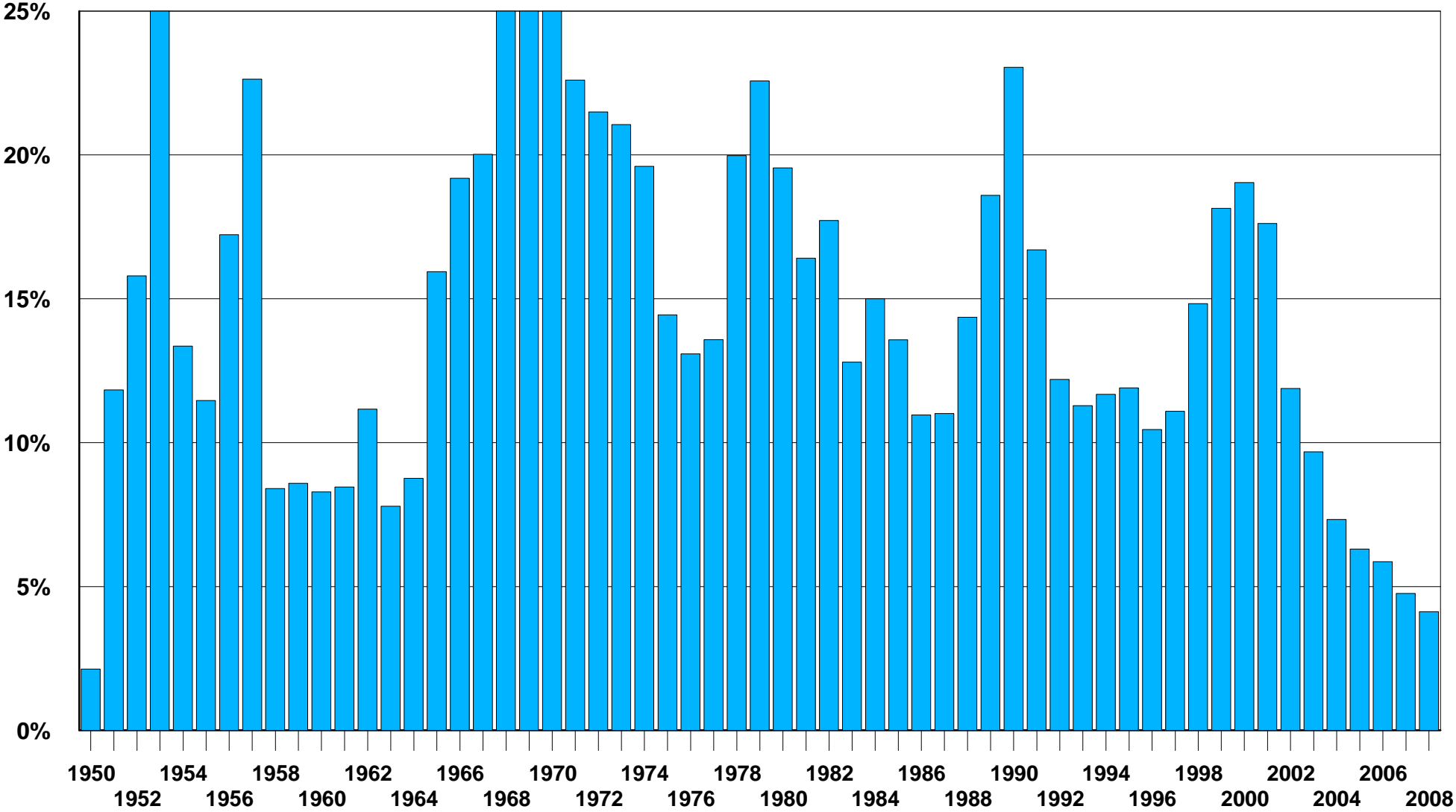
Household and Federal Debt Percent of GDP: Post-WWII Debt Levels fell but have rocketed to All-Time Highs

% Debt to GDP at end of each Fiscal Year



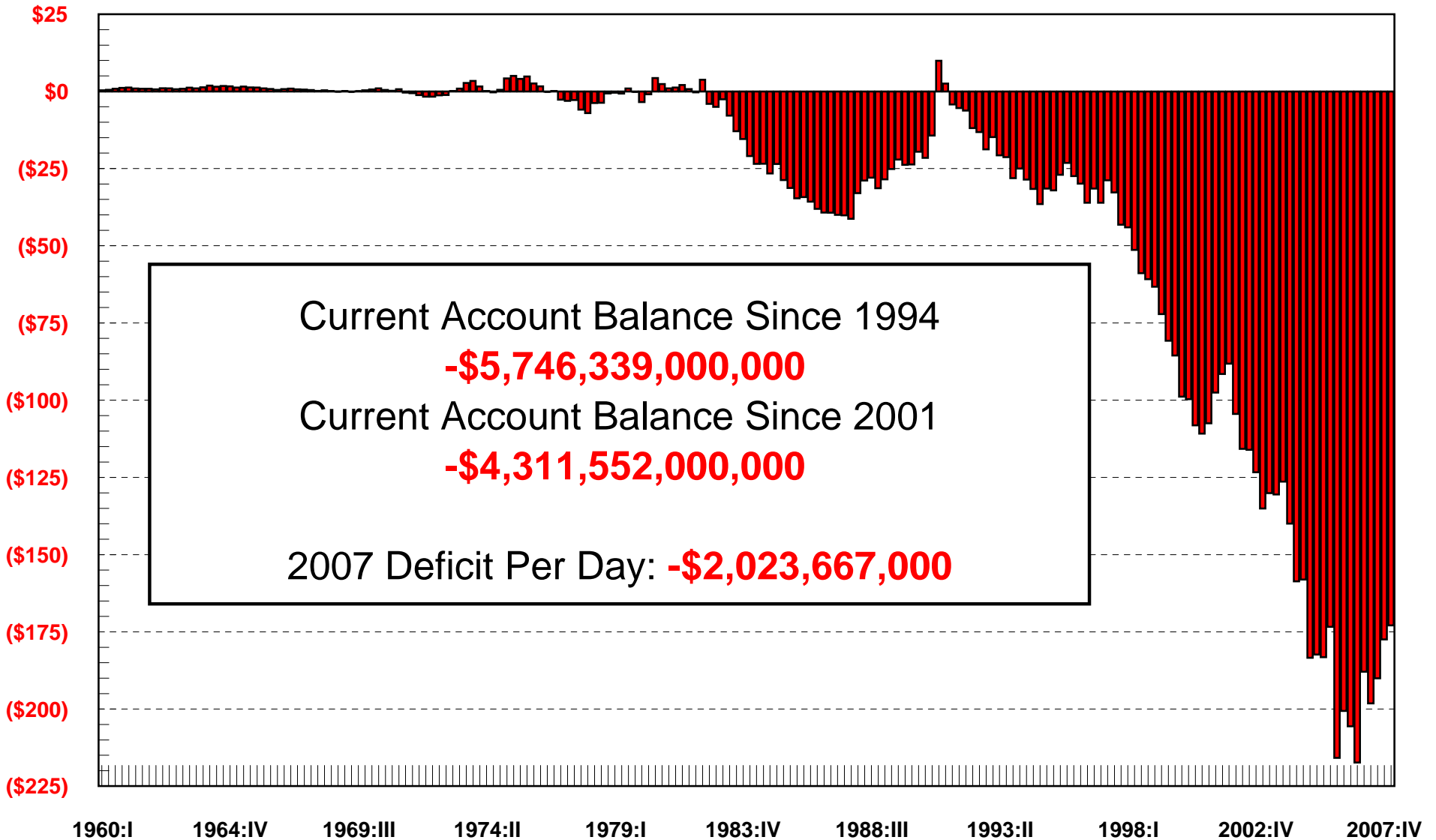
US in Slowest 7-Year Job Growth Since 1943-50

% US Job Growth in Seven Years Ending February Each Year



-\$4.3 Trillion in US Global Losses: 2001-2007

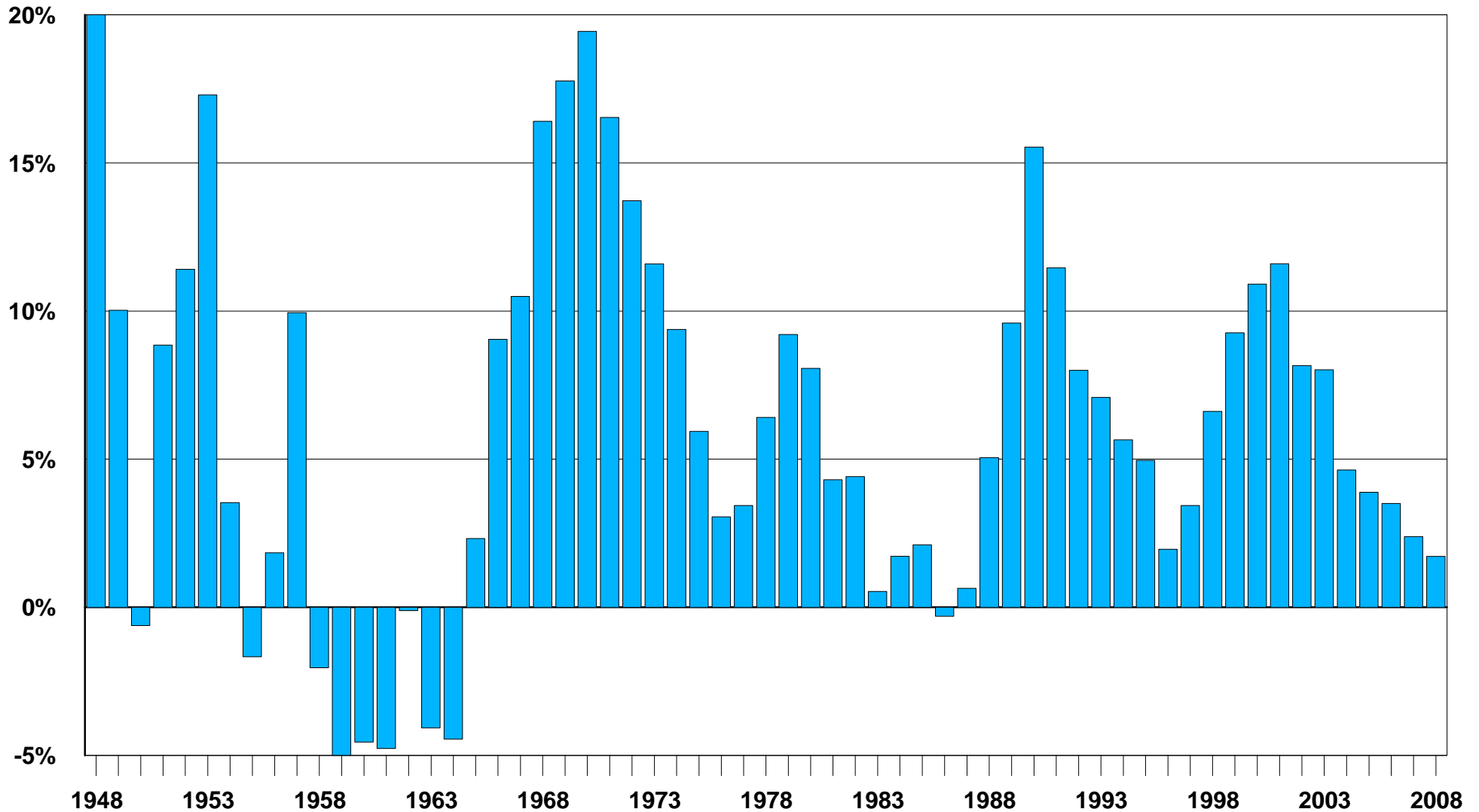
\$ Billion: US Quarterly Balances in All Global Current Accounts



Pennsylvania's Job Gains and Losses:

Recent Gains are the Weakest Since the Reagan mid-1980s

% Seven-Year Job Gain or Loss Ending January Each Year



The Recent Jobs Record in the States

Rank	(States: 1,000 of jobs)	----- January of Each Year -----			Change: 2008/2007		Change: 2008/2001	
		2001	2007	2008	1,000	(PERCENT)	1,000	(PERCENT)
1	Michigan.....	4,511.7	4,186.2	4,139.0	-47.2	-1.1%	-372.7	-8.3%
2	Ohio.....	5,488.3	5,324.2	5,320.1	-4.1	-0.1%	-168.2	-3.1%
3	Massachusetts.....	3,317.0	3,198.5	3,221.9	23.4	0.7%	-95.1	-2.9%
4	Illinois.....	5,906.2	5,843.2	5,881.2	38.0	0.7%	-25.0	-0.4%
5	Connecticut.....	1,665.2	1,666.5	1,679.2	12.7	0.8%	14.0	0.8%
6	New York.....	8,523.9	8,532.9	8,618.2	85.3	1.0%	94.3	1.1%
7	Vermont.....	301.7	305.8	305.7	-0.1	-0.0%	4.0	1.3%
8	Wisconsin.....	2,770.7	2,814.4	2,809.0	-5.4	-0.2%	38.3	1.4%
9	Indiana.....	2,901.7	2,921.6	2,941.9	20.3	0.7%	40.2	1.4%
10	Maine.....	588.5	596.1	597.0	0.9	0.2%	8.5	1.4%
11	Louisiana.....	1,897.3	1,876.5	1,925.3	48.8	2.6%	28.0	1.5%
12	Mississippi.....	1,128.8	1,138.4	1,147.3	8.9	0.8%	18.5	1.6%
13	Pennsylvania.....	5,613.1	5,679.4	5,707.3	27.9	0.5%	94.2	1.7%
14	Rhode Island.....	468.4	481.9	476.4	-5.5	-1.1%	8.0	1.7%
15	Missouri.....	2,688.3	2,729.0	2,743.7	14.7	0.5%	55.4	2.1%
16	New Jersey.....	3,922.5	3,993.6	4,008.0	14.4	0.4%	85.5	2.2%
17	Kansas.....	1,330.1	1,341.2	1,362.5	21.3	1.6%	32.4	2.4%
18	Minnesota.....	2,648.8	2,711.4	2,725.9	14.5	0.5%	77.1	2.9%
19	Tennessee.....	2,673.4	2,744.9	2,754.8	9.9	0.4%	81.4	3.0%
20	West Virginia.....	719.0	740.5	741.2	0.7	0.1%	22.2	3.1%
21	New Hampshire.....	622.1	632.0	641.6	9.6	1.5%	19.5	3.1%
22	California.....	14,513.5	14,938.0	14,975.1	37.1	0.2%	461.6	3.2%
23	Iowa.....	1,446.7	1,482.6	1,493.2	10.6	0.7%	46.5	3.2%
24	Kentucky.....	1,791.5	1,830.8	1,854.9	24.1	1.3%	63.4	3.5%
25	Delaware.....	410.9	425.8	427.6	1.8	0.4%	16.7	4.1%
	US Totals.....	132,469	137,108	138,056	948	0.7%	5,587	4.2%
26	Arkansas.....	1,139.8	1,184.9	1,190.3	5.4	0.5%	50.5	4.4%
27	Colorado.....	2,210.5	2,262.6	2,314.6	52.0	2.3%	104.1	4.7%
28	Georgia.....	3,931.3	4,094.3	4,135.9	41.6	1.0%	204.6	5.2%
29	Alabama.....	1,894.4	1,974.9	1,997.5	22.6	1.1%	103.1	5.4%
30	Nebraska.....	901.3	938.1	956.2	18.1	1.9%	54.9	6.1%
31	Oklahoma.....	1,467.5	1,528.8	1,558.0	29.2	1.9%	90.5	6.2%
32	North Carolina.....	3,884.8	4,053.7	4,131.6	77.9	1.9%	246.8	6.4%
33	Maryland.....	2,415.0	2,550.8	2,571.6	20.8	0.8%	156.6	6.5%
34	South Carolina.....	1,808.5	1,904.3	1,931.5	27.2	1.4%	123.0	6.8%
35	Virginia.....	3,472.6	3,699.8	3,718.2	18.4	0.5%	245.6	7.1%
36	Oregon.....	1,593.1	1,688.3	1,707.9	19.6	1.2%	114.8	7.2%
	District of Columbia....	640.7	681.8	691.0	9.2	1.3%	50.3	7.9%
37	South Dakota.....	369.2	391.9	399.0	7.1	1.8%	29.8	8.1%
38	Washington.....	2,670.9	2,843.3	2,909.4	66.1	2.3%	238.5	8.9%
39	Texas.....	9,423.5	10,106.1	10,374.8	268.7	2.7%	951.3	10.1%
40	North Dakota.....	322.5	348.5	356.2	7.7	2.2%	33.7	10.4%
41	New Mexico.....	739.8	824.4	828.8	4.4	0.5%	89.0	12.0%
42	Alaska.....	264.8	296.3	298.4	2.1	0.7%	33.6	12.7%
43	Florida.....	7,096.7	8,010.9	8,008.0	-2.9	-0.0%	911.3	12.8%
44	Hawaii.....	546.9	614.9	621.9	7.0	1.1%	75.0	13.7%
45	Montana.....	379.8	427.0	434.4	7.4	1.7%	54.6	14.4%
46	Idaho.....	549.3	628.2	636.4	8.2	1.3%	87.1	15.9%
47	Utah.....	1,069.2	1,219.2	1,251.0	31.8	2.6%	181.8	17.0%
48	Arizona.....	2,239.4	2,630.7	2,647.1	16.4	0.6%	407.7	18.2%
49	Wyoming.....	233.1	275.1	283.5	8.4	3.1%	50.4	21.6%
50	Nevada.....	1,033.8	1,268.2	1,277.4	9.2	0.7%	243.6	23.6%

The Cost in Jobs of China Trade Deficits: 2000-'07

Worsening Trade Losses Just Since 2000 Cost 1 Million Jobs

Adjusted for productivity and population changes	Goods Balance: China		Jobs Lost to China Deficit		Jobs Effect
	2000	2007	2000	2007	2000-'07
	\$ Billions		Number of Jobs		Change
United States.....	-\$83,971	-\$256,269	-945,983	-1,961,242	-1,015,259
California.....	-10,118	-31,057	-113,990	-237,681	-123,692
Texas.....	-6,234	-20,310	-70,226	-155,434	-85,209
Florida.....	-4,776	-15,507	-53,801	-118,676	-64,875
New York.....	-5,653	-16,396	-63,681	-125,480	-61,799
Georgia.....	-2,449	-8,110	-27,592	-62,063	-34,471
North Carolina.....	-2,404	-7,699	-27,085	-58,918	-31,833
Illinois.....	-3,701	-10,920	-41,699	-83,572	-41,872
Arizona.....	-1,538	-5,386	-17,322	-41,217	-23,895
Pennsylvania.....	-3,656	-10,563	-41,184	-80,842	-39,658
Ohio.....	-3,382	-9,743	-38,095	-74,562	-36,466
Virginia.....	-2,114	-6,552	-23,818	-50,147	-26,329
Michigan.....	-2,962	-8,557	-33,373	-65,490	-32,117
New Jersey.....	-2,509	-7,380	-28,266	-56,479	-28,213
Washington.....	-1,759	-5,496	-19,817	-42,060	-22,243
Tennessee.....	-1,697	-5,231	-19,119	-40,033	-20,914
Colorado.....	-1,288	-4,131	-14,509	-31,611	-17,102
Indiana.....	-1,813	-5,391	-20,421	-41,259	-20,838
Missouri.....	-1,668	-4,995	-18,793	-38,223	-19,430
Maryland.....	-1,580	-4,774	-17,803	-36,532	-18,729
Wisconsin.....	-1,599	-4,759	-18,016	-36,424	-18,407
South Carolina.....	-1,197	-3,745	-13,488	-28,660	-15,172
Minnesota.....	-1,468	-4,416	-16,541	-33,797	-17,256
Massachusetts.....	-1,893	-5,480	-21,331	-41,938	-20,608
Nevada.....	-601	-2,180	-6,766	-16,681	-9,914
Oregon.....	-1,021	-3,184	-11,502	-24,367	-12,865
Alabama.....	-1,325	-3,932	-14,924	-30,092	-15,168
Kentucky.....	-1,205	-3,604	-13,573	-27,579	-14,006
Utah.....	-668	-2,248	-7,524	-17,201	-9,677
Oklahoma.....	-1,028	-3,073	-11,579	-23,521	-11,942
Connecticut.....	-1,015	-2,976	-11,438	-22,773	-11,335
Arkansas.....	-797	-2,409	-8,979	-18,433	-9,454
Mississippi.....	-848	-2,480	-9,549	-18,979	-9,430
Iowa.....	-871	-2,539	-9,816	-19,429	-9,613
Kansas.....	-801	-2,359	-9,027	-18,050	-9,023
Louisiana.....	-1,330	-3,648	-14,981	-27,916	-12,935
New Mexico.....	-542	-1,674	-6,104	-12,809	-6,705
Idaho.....	-387	-1,274	-4,356	-9,750	-5,393
Nebraska.....	-510	-1,508	-5,743	-11,539	-5,795
New Hampshire.....	-369	-1,118	-4,158	-8,556	-4,398
West Virginia.....	-538	-1,540	-6,058	-11,782	-5,725
Hawaii.....	-361	-1,090	-4,062	-8,345	-4,283
Maine.....	-380	-1,119	-4,282	-8,565	-4,283
Delaware.....	-234	-735	-2,636	-5,623	-2,987
Montana.....	-269	-814	-3,028	-6,228	-3,200
Rhode Island.....	-313	-899	-3,523	-6,878	-3,356
South Dakota.....	-225	-676	-2,533	-5,177	-2,644
Alaska.....	-187	-581	-2,103	-4,444	-2,341
Wyoming.....	-147	-444	-1,656	-3,400	-1,744
District of Columbia.....	-170	-500	-1,917	-3,825	-1,908
Vermont.....	-181	-528	-2,045	-4,040	-1,995
North Dakota.....	-191	-544	-2,150	-4,160	-2,010

State trade balances are allocated as share of national population each year.

US Dept. of Commerce, Bureau of the Census and MBG Information Services

Seven Years of Record Losses in Manufacturing Jobs

Rank	Thousands Manufacturing Jobs:	--- January Each Year ---			Change: 2008/2007		Change: 2008/2001	
		2001	2007	2008	1,000	Percent	1,000	Percent
1	District of Columbia.....	3.5	1.7	1.6	-0.1	-5.9%	-1.9	-54.3%
2	Rhode Island.....	71.0	51.4	49.2	-2.2	-4.3%	-21.8	-30.7%
3	Michigan.....	846.3	616.1	591.5	-24.6	-4.0%	-254.8	-30.1%
4	North Carolina.....	741.1	544.2	530.0	-14.2	-2.6%	-211.1	-28.5%
5	Massachusetts.....	407.8	296.9	292.0	-4.9	-1.7%	-115.8	-28.4%
6	New York.....	728.8	554.6	538.3	-16.3	-2.9%	-190.5	-26.1%
7	Maine.....	77.2	58.3	57.6	-0.7	-1.2%	-19.6	-25.4%
8	New Jersey.....	411.3	314.5	307.0	-7.5	-2.4%	-104.3	-25.4%
9	New Hampshire.....	103.6	77.5	77.7	0.2	0.3%	-25.9	-25.0%
10	Vermont.....	46.7	35.8	35.2	-0.6	-1.7%	-11.5	-24.6%
11	Pennsylvania.....	851.5	659.9	644.2	-15.7	-2.4%	-207.3	-24.3%
12	South Carolina.....	327.7	250.0	248.0	-2.0	-0.8%	-79.7	-24.3%
13	Ohio.....	992.2	774.8	762.0	-12.8	-1.7%	-230.2	-23.2%
14	Virginia.....	354.1	279.4	273.2	-6.2	-2.2%	-80.9	-22.8%
15	Maryland.....	168.5	132.2	130.2	-2.0	-1.5%	-38.3	-22.7%
16	Colorado.....	185.8	146.0	144.5	-1.5	-1.0%	-41.3	-22.2%
17	West Virginia.....	73.9	59.1	57.6	-1.5	-2.5%	-16.3	-22.1%
18	California.....	1837.6	1454.9	1432.3	-22.6	-1.6%	-405.3	-22.1%
19	Arkansas.....	235.0	192.7	184.7	-8.0	-4.2%	-50.3	-21.4%
20	Tennessee.....	473.0	387.9	371.9	-16.0	-4.1%	-101.1	-21.4%
21	Mississippi.....	211.1	172.9	166.7	-6.2	-3.6%	-44.4	-21.0%
22	Illinois.....	842.7	677.0	673.2	-3.8	-0.6%	-169.5	-20.1%
	US Totals.....	16,993	13,898	13,638	-260	-1.9%	-3,355	-19.7%
23	Georgia.....	526.4	436.9	423.4	-13.5	-3.1%	-103.0	-19.6%
24	Connecticut.....	233.7	191.8	190.2	-1.6	-0.8%	-43.5	-18.6%
25	Missouri.....	355.3	300.1	290.3	-9.8	-3.3%	-65.0	-18.3%
26	Florida.....	456.6	395.3	376.5	-18.8	-4.8%	-80.1	-17.5%
27	Kentucky.....	302.0	259.1	251.2	-7.9	-3.0%	-50.8	-16.8%
28	New Mexico.....	41.5	37.2	35.1	-2.1	-5.6%	-6.4	-15.4%
29	Wisconsin.....	577.0	498.7	489.0	-9.7	-1.9%	-88.0	-15.3%
30	Indiana.....	633.4	549.5	542.1	-7.4	-1.3%	-91.3	-14.4%
31	Oklahoma.....	174.5	148.9	150.0	1.1	0.7%	-24.5	-14.0%
32	Delaware.....	37.9	33.1	32.6	-0.5	-1.5%	-5.3	-14.0%
33	Arizona.....	208.6	181.6	179.6	-2.0	-1.1%	-29.0	-13.9%
34	Minnesota.....	389.0	338.4	335.2	-3.2	-0.9%	-53.8	-13.8%
35	Texas.....	1055.4	926.2	927.9	1.7	0.2%	-127.5	-12.1%
36	Alabama.....	333.8	297.8	293.5	-4.3	-1.4%	-40.3	-12.1%
37	Nebraska.....	113.1	100.0	100.8	0.8	0.8%	-12.3	-10.9%
38	Louisiana.....	174.8	153.5	158.3	4.8	3.1%	-16.5	-9.4%
39	Oregon.....	219.9	203.6	199.2	-4.4	-2.2%	-20.7	-9.4%
40	Idaho.....	70.3	65.9	63.8	-2.1	-3.2%	-6.5	-9.2%
41	Hawaii.....	16.6	15.2	15.1	-0.1	-0.7%	-1.5	-9.0%
42	Washington.....	321.7	285.8	293.9	8.1	2.8%	-27.8	-8.6%
43	Iowa.....	245.6	227.8	228.3	0.5	0.2%	-17.3	-7.0%
44	Montana.....	21.6	20.2	20.1	-0.1	-0.5%	-1.5	-6.9%
45	Kansas.....	197.6	182.4	186.3	3.9	2.1%	-11.3	-5.7%
46	South Dakota.....	42.9	41.8	42.0	0.2	0.5%	-0.9	-2.1%
47	Wyoming.....	10.3	10.3	10.3	0.0	0.0%	0.0	0.0%
48	Utah.....	125.3	125.0	128.1	3.1	2.5%	2.8	2.2%
49	North Dakota.....	23.7	25.5	25.7	0.2	0.8%	2.0	8.4%
50	Nevada.....	43.8	49.8	50.5	0.7	1.4%	6.7	15.3%
	Alaska.....	8.5	10.8	10.8	0.0	0.0%	2.3	27.1%

The Median Income of Households: 2000 to 2006

Household Incomes Constant 2006 Prices	--- Median Incomes ---		Percent of US Median		Change: 2000 to 2006	
	2000	2006	2000	2006	Dollars	Percent
Missouri.....	\$52,800	\$44,579	107.4%	92.5%	-\$8,221	-15.6%
Mississippi.....	40,158	34,733	81.7%	72.1%	-5,425	-13.5%
Minnesota.....	63,518	56,211	129.2%	116.6%	-7,307	-11.5%
North Carolina.....	44,862	39,797	91.3%	82.6%	-5,065	-11.3%
Delaware.....	58,968	52,438	119.9%	108.8%	-6,530	-11.1%
South Carolina.....	43,988	39,617	89.5%	82.2%	-4,371	-9.9%
Illinois.....	53,933	48,671	109.7%	101.0%	-5,262	-9.8%
Alaska.....	61,874	56,418	125.9%	117.0%	-5,456	-8.8%
Ohio.....	50,301	45,900	102.3%	95.2%	-4,401	-8.7%
Michigan.....	53,286	48,647	108.4%	100.9%	-4,639	-8.7%
Alabama.....	41,475	37,952	84.4%	78.7%	-3,523	-8.5%
Kentucky.....	42,460	39,485	86.4%	81.9%	-2,975	-7.0%
Oregon.....	49,759	47,091	101.2%	97.7%	-2,668	-5.4%
Kansas.....	48,073	45,552	97.8%	94.5%	-2,521	-5.2%
Indiana.....	47,845	45,407	97.3%	94.2%	-2,438	-5.1%
Texas.....	45,204	43,307	91.9%	89.8%	-1,897	-4.2%
North Dakota.....	42,145	41,047	85.7%	85.2%	-1,098	-2.6%
New Mexico.....	41,088	40,028	83.6%	83.0%	-1,060	-2.6%
Nevada.....	53,574	52,282	109.0%	108.5%	-1,292	-2.4%
Wisconsin.....	52,790	51,692	107.4%	107.2%	-1,098	-2.1%
US.....	\$49,163	\$48,201	100.0%	100.0%	-962	-2.0%
Utah.....	55,672	54,628	113.2%	113.3%	-1,044	-1.9%
Pennsylvania.....	49,380	48,477	100.4%	100.6%	-903	-1.8%
Nebraska.....	48,882	48,145	99.4%	99.9%	-737	-1.5%
Colorado.....	56,480	55,697	114.9%	115.6%	-783	-1.4%
Maryland.....	63,851	63,668	129.9%	132.1%	-183	-0.3%
Arizona.....	46,579	46,657	94.7%	96.8%	78	0.2%
Hawaii.....	60,351	60,470	122.8%	125.5%	119	0.2%
Iowa.....	47,993	48,126	97.6%	99.8%	133	0.3%
Florida.....	45,493	45,676	92.5%	94.8%	183	0.4%
District of Columbia.....	48,263	48,477	98.2%	100.6%	214	0.4%
Georgia.....	49,058	49,344	99.8%	102.4%	286	0.6%
California.....	54,813	55,319	111.5%	114.8%	506	0.9%
Massachusetts.....	54,739	55,330	111.3%	114.8%	591	1.1%
New York.....	47,704	48,222	97.0%	100.0%	518	1.1%
Wyoming.....	46,398	47,041	94.4%	97.6%	643	1.4%
Louisiana.....	35,965	36,488	73.2%	75.7%	523	1.5%
Tennessee.....	39,920	40,693	81.2%	84.4%	773	1.9%
Oklahoma.....	37,972	38,838	77.2%	80.6%	866	2.3%
Virginia.....	55,219	57,119	112.3%	118.5%	1,900	3.4%
New Hampshire.....	59,625	61,970	121.3%	128.6%	2,345	3.9%
Maine.....	43,632	45,642	88.7%	94.7%	2,010	4.6%
Idaho.....	44,036	46,213	89.6%	95.9%	2,177	4.9%
Connecticut.....	58,742	62,404	119.5%	129.5%	3,662	6.2%
South Dakota.....	42,706	45,427	86.9%	94.2%	2,721	6.4%
Arkansas.....	34,770	37,057	70.7%	76.9%	2,287	6.6%
Montana.....	38,376	41,105	78.1%	85.3%	2,729	7.1%
Rhode Island.....	49,405	53,736	100.5%	111.5%	4,331	8.8%
Washington.....	49,789	54,723	101.3%	113.5%	4,934	9.9%
West Virginia.....	34,435	38,419	70.0%	79.7%	3,984	11.6%
Vermont.....	46,357	51,981	94.3%	107.8%	5,624	12.1%
New Jersey.....	59,015	68,059	120.0%	141.2%	9,044	15.3%

US Department of Commerce, Bureau of the Census and MBG Information Services

Compensation Per Job in Pennsylvania; Replacing High Wage With Low Wage Jobs

Code	Industries	Compensation per Job		Compensation vs Mfging		Change in jobs: 2001-'06	
		2001	2006	2001	2006	Number	Percent
1	Wage and salary employment by place of work.....	\$41,083	\$49,895	-19.5%	-22.3%	69,509	1.2%
81	Farm wage and salary employment.....	21,964	24,022	-57.0%	-62.6%	-3,095	-13.7%
82	Nonfarm wage and salary employment.....	41,156	49,979	-19.3%	-22.2%	72,604	1.2%
90	Private wage and salary.....	40,619	49,239	-20.4%	-23.3%	48,600	0.9%
100	Forestry, Fishing, Related Activities.....	23,695	28,194	-53.6%	-56.1%	-1,444	-13.6%
101	Forestry and logging.....	23,527	29,064	-53.9%	-54.7%	-306	-24.1%
103	Agriculture and forestry support.....	23,459	27,577	-54.0%	-57.1%	-723	-8.4%
200	Mining.....	57,887	68,915	13.5%	7.3%	1,245	6.6%
201	Oil and gas extraction.....	64,066	79,724	25.6%	24.1%	200	11.0%
202	Mining (except oil and gas).....	58,514	70,905	14.7%	10.4%	-449	-3.1%
203	Support activities for mining.....	49,580	56,290	-2.8%	-12.4%	1,494	61.3%
300	Utilities.....	83,604	125,029	63.9%	94.7%	-11,954	-36.2%
400	Construction.....	48,712	57,988	-4.5%	-9.7%	11,023	4.2%
401	Construction of buildings.....	47,270	58,615	-7.4%	-8.7%	3,100	4.8%
402	Heavy and civil engineering construction.....	56,390	69,994	10.5%	9.0%	3,070	9.4%
403	Specialty trade contractors.....	47,734	55,172	-6.4%	-14.1%	4,853	3.0%
500	Manufacturing.....	51,021	64,222	0.0%	0.0%	-147,447	-17.9%
510	Durable goods manufacturing.....	51,458	63,943	0.9%	-0.4%	-76,463	-15.5%
511	Wood product manufacturing.....	34,546	40,533	-32.3%	-36.9%	2,092	7.2%
512	Nonmetallic mineral product manufacturing.....	51,091	61,438	0.1%	-4.3%	-7,992	-22.6%
513	Primary metal manufacturing.....	58,699	76,203	15.0%	18.7%	-10,187	-19.0%
514	Fabricated metal product manufacturing.....	45,964	54,722	-9.9%	-14.8%	-10,655	-10.5%
515	Machinery manufacturing.....	54,260	66,323	6.3%	3.3%	-11,942	-17.3%
516	Computer/electronic product manufacturing.....	58,409	74,932	14.5%	16.7%	-23,331	-36.2%
517	Electrical equipment/appliance manufacturing.....	53,792	68,255	5.4%	6.3%	-3,150	-10.5%
518	Motor vehicles, bodies/trailers/parts mfging.....	N/A	59,289	N/A	-7.7%	N/A	N/A
519	Other transportation equipment manufacturing..	N/A	98,406	N/A	53.2%	N/A	N/A
521	Furniture and related product manufacturing.....	38,278	45,261	-25.0%	-29.5%	-3,456	-12.7%
522	Miscellaneous manufacturing.....	48,948	70,189	-4.1%	9.3%	-3,349	-9.6%
530	Nondurable goods manufacturing.....	50,368	64,672	-1.3%	0.7%	-70,984	-21.5%
531	Food manufacturing.....	42,844	52,276	-16.0%	-18.6%	-7,885	-10.2%
532	Beverage and tobacco product manufacturing..	51,745	70,654	1.4%	10.0%	-3,856	-35.8%
533	Textile mills.....	36,391	43,802	-28.7%	-31.8%	-5,372	-48.5%
534	Textile product mills.....	34,581	40,467	-32.2%	-37.0%	-3,375	-38.1%
535	Apparel manufacturing.....	30,401	40,527	-40.4%	-36.9%	-11,946	-49.6%
536	Leather and allied product manufacturing.....	34,541	39,124	-32.3%	-39.1%	-2,669	-65.6%
537	Paper manufacturing.....	52,004	64,523	1.9%	0.5%	-6,037	-18.4%
538	Printing and related support activities.....	43,027	51,480	-15.7%	-19.8%	-8,166	-18.0%
539	Petroleum and coal products manufacturing.....	71,907	111,493	40.9%	73.6%	-708	-9.6%
541	Chemical manufacturing.....	81,486	109,078	59.7%	69.8%	-14,888	-24.0%
542	Plastics and rubber products manufacturing.....	41,606	51,887	-18.5%	-19.2%	-6,082	-13.2%
600	Wholesale Trade.....	55,109	68,958	8.0%	7.4%	10,447	4.5%
700	Retail trade.....	24,562	27,967	-51.9%	-56.5%	-14,576	-2.1%
701	Motor vehicle and parts dealers.....	39,218	42,898	-23.1%	-33.2%	1,232	1.5%
702	Furniture and home furnishings stores.....	30,747	33,951	-39.7%	-47.1%	100	0.5%
703	Electronics and appliance stores.....	40,028	36,701	-21.5%	-42.9%	-1,714	-7.9%
704	Building material and garden supply stores.....	28,648	32,918	-43.9%	-48.7%	4,522	9.7%
705	Food and beverage stores.....	20,283	22,496	-60.2%	-65.0%	-8,401	-5.4%
706	Health and personal care stores.....	26,365	33,159	-48.3%	-48.4%	99	0.2%
707	Gasoline stations.....	17,323	19,230	-66.0%	-70.1%	-241	-0.6%
708	Clothing and clothing accessories stores.....	19,186	20,158	-62.4%	-68.6%	1,669	2.8%
709	Sporting goods, hobby, book and music stores..	18,517	19,824	-63.7%	-69.1%	-3,151	-11.0%
711	General merchandise stores.....	18,152	21,420	-64.4%	-66.6%	-200	-0.2%
712	Miscellaneous store retailers.....	20,073	23,188	-60.7%	-63.9%	-3,836	-8.9%
713	Nonstore retailers.....	38,772	55,351	-24.0%	-13.8%	-4,655	-14.9%
800	Transportation and Warehousing.....	43,616	48,751	-14.5%	-24.1%	13,678	6.8%
801	Air transportation.....	68,826	67,478	34.9%	5.1%	-10,807	-43.6%
803	Water transportation.....	76,016	83,741	49.0%	30.4%	-182	-18.9%
804	Truck transportation.....	44,866	55,771	-12.1%	-13.2%	789	1.3%

Compensation Per Job in Pennsylvania; Replacing High Wage With Low Wage Jobs

Code	Industries	Compensation per Job		Compensation vs Mfging		Change in jobs: 2001-'06	
		2001	2006	2001	2006	Number	Percent
805	Transit and ground passenger transportation.....	21,164	23,174	-58.5%	-63.9%	3,028	10.4%
806	Pipeline transportation.....	77,287	92,485	51.5%	44.0%	-79	-4.2%
807	Scenic and sightseeing transportation.....	18,294	25,937	-64.1%	-59.6%	154	23.0%
808	Support activities for transportation.....	39,997	47,105	-21.6%	-26.7%	1,326	10.5%
811	Warehousing and storage.....	36,808	43,354	-27.9%	-32.5%	20,755	69.0%
900	Information.....	57,640	68,186	13.0%	6.2%	-24,544	-18.4%
901	Publishing industries, except Internet.....	50,372	62,930	-1.3%	-2.0%	-3,450	-8.9%
902	Motion picture and sound recording industries....	30,513	33,937	-40.2%	-47.2%	-540	-7.2%
903	Broadcasting, except Internet.....	56,701	71,716	11.1%	11.7%	-1,318	-10.9%
904	Internet publishing and broadcasting.....	76,793	86,709	50.5%	35.0%	-363	-45.6%
905	Telecommunications.....	64,734	82,744	26.9%	28.8%	-10,017	-21.2%
906	ISPs, search portals, and data processing.....	73,599	73,808	44.3%	14.9%	-8,663	-40.2%
907	Other information services.....	21,104	22,752	-58.6%	-64.6%	-193	-3.6%
1000	Finance and Insurance.....	63,579	84,174	24.6%	31.1%	112	0.0%
1002	Credit intermediation and related activities.....	49,137	63,215	-3.7%	-1.6%	1,445	1.3%
1003	Securities, commodity contracts, investments.....	123,526	157,076	142.1%	144.6%	-1,306	-4.7%
1004	Insurance carriers and related activities.....	58,898	75,429	15.4%	17.4%	-612	-0.5%
1100	Real Estate and Rental and Leasing.....	37,434	49,553	-26.6%	-22.8%	-2,269	-3.2%
1101	Real estate.....	38,491	50,592	-24.6%	-21.2%	474	1.0%
1102	Rental and leasing services.....	34,813	44,815	-31.8%	-30.2%	-3,036	-12.1%
1103	Lessors of nonfinancial intangible assets.....	54,456	92,283	6.7%	43.7%	293	28.4%
1200	Professional and Technical Eervices.....	66,311	79,037	30.0%	23.1%	17,763	5.8%
1300	Management of Companies/Enterprises.....	77,075	105,729	51.1%	64.6%	33,018	54.2%
1400	Administrative and Waste Services.....	28,357	33,404	-44.4%	-48.0%	5,069	1.9%
1401	Administrative and support services.....	27,409	32,201	-46.3%	-49.9%	3,775	1.5%
1402	Waste management and remediation services....	44,943	53,045	-11.9%	-17.4%	1,294	8.7%
1500	Educational Services.....	32,649	40,405	-36.0%	-37.1%	11,246	5.4%
1600	Health Care and Social Assistance.....	37,191	44,547	-27.1%	-30.6%	100,648	13.2%
1601	Ambulatory health care services.....	50,231	58,491	-1.5%	-8.9%	35,111	15.7%
1602	Hospitals.....	40,276	52,619	-21.1%	-18.1%	11,596	4.5%
1603	Nursing and residential care facilities.....	25,962	30,843	-49.1%	-52.0%	12,876	7.3%
1604	Social assistance.....	21,395	23,422	-58.1%	-63.5%	41,065	37.5%
1700	Arts, Entertainment, and Recreation.....	25,873	30,351	-49.3%	-52.7%	9,810	12.9%
1701	Performing arts and spectator sports.....	53,649	67,028	5.2%	4.4%	2,073	13.4%
1702	Museums, historical sites, zoos, and parks.....	27,007	31,498	-47.1%	-51.0%	625	12.2%
1703	Amusement, gambling, and recreation.....	18,027	19,970	-64.7%	-68.9%	7,112	12.8%
1800	Accommodation and Food Services.....	15,037	17,485	-70.5%	-72.8%	26,595	6.9%
1801	Accommodation.....	22,034	26,024	-56.8%	-59.5%	509	1.0%
1802	Food services and drinking places.....	13,948	16,240	-72.7%	-74.7%	26,086	7.8%
1900	Other Services, Except Public Admin.....	23,835	29,093	-53.3%	-54.7%	10,180	3.5%
1901	Repair and maintenance.....	33,251	40,270	-34.8%	-37.3%	768	1.4%
1902	Personal and laundry services.....	23,514	26,385	-53.9%	-58.9%	2,265	3.6%
1903	Membership associations and organizations.....	23,102	29,804	-54.7%	-53.6%	5,092	3.5%
1904	Private households.....	10,271	11,176	-79.9%	-82.6%	2,055	7.1%
2000	Government and Government Enterprises.....	44,627	54,658	-12.5%	-14.9%	24,004	3.0%
2001	Federal, civilian.....	72,798	91,254	42.7%	42.1%	-49	-0.0%
2002	Military.....	22,289	43,164	-56.3%	-32.8%	-3,372	-7.6%
2010	State and local.....	41,581	49,644	-18.5%	-22.7%	27,425	4.3%
2011	State government.....	41,278	47,277	-19.1%	-26.4%	12,623	7.0%
2012	Local government.....	41,699	50,597	-18.3%	-21.2%	14,802	3.2%

© CW McMillion/MBG Information Services

US Department of Commerce and MBG Information Services

Compensation Per Job in Pennsylvania; Replacing High Wage With Low Wage Jobs

Industries ranked by job growth: 2006/2001		Compensation Per Job		Compensation vs Mfgng		Change in jobs: 2001-'06	
Code	Industries	2001	2006	2001	2006	Number	Percent
1600	Health care and social assistance.....	\$37,191	\$44,547	-27.1%	-30.6%	100,648	13.2%
82	Nonfarm wage and salary employment.....	41,156	49,979	-19.3%	-22.2%	72,604	1.2%
1	Wage and salary employment by place of work.....	41,083	49,895	-19.5%	-22.3%	69,509	1.2%
90	Private wage and salary.....	40,619	49,239	-20.4%	-23.3%	48,600	0.9%
1604	Social assistance.....	21,395	23,422	-58.1%	-63.5%	41,065	37.5%
1601	Ambulatory health care services.....	50,231	58,491	-1.5%	-8.9%	35,111	15.7%
1300	Management of companies/enterprises.....	77,075	105,729	51.1%	64.6%	33,018	54.2%
2010	State and local.....	41,581	49,644	-18.5%	-22.7%	27,425	4.3%
1800	Accommodation and food services.....	15,037	17,485	-70.5%	-72.8%	26,595	6.9%
1802	Food services and drinking places.....	13,948	16,240	-72.7%	-74.7%	26,086	7.8%
2000	Government and government enterprises.....	44,627	54,658	-12.5%	-14.9%	24,004	3.0%
811	Warehousing and storage.....	36,808	43,354	-27.9%	-32.5%	20,755	69.0%
1200	Professional and technical services.....	66,311	79,037	30.0%	23.1%	17,763	5.8%
2012	Local government.....	41,699	50,597	-18.3%	-21.2%	14,802	3.2%
800	Transportation and warehousing.....	43,616	48,751	-14.5%	-24.1%	13,678	6.8%
1603	Nursing and residential care facilities.....	25,962	30,843	-49.1%	-52.0%	12,876	7.3%
2011	State government.....	41,278	47,277	-19.1%	-26.4%	12,623	7.0%
1602	Hospitals.....	40,276	52,619	-21.1%	-18.1%	11,596	4.5%
1500	Educational services.....	32,649	40,405	-36.0%	-37.1%	11,246	5.4%
400	Construction.....	48,712	57,988	-4.5%	-9.7%	11,023	4.2%
600	Wholesale trade.....	55,109	68,958	8.0%	7.4%	10,447	4.5%
1900	Other Services, Except Public Admin.....	23,835	29,093	-53.3%	-54.7%	10,180	3.5%
1700	Arts, entertainment, and recreation.....	25,873	30,351	-49.3%	-52.7%	9,810	12.9%
1703	Amusement, gambling, and recreation.....	18,027	19,970	-64.7%	-68.9%	7,112	12.8%
1903	Membership associations and organizations.....	23,102	29,804	-54.7%	-53.6%	5,092	3.5%
1400	Administrative and waste services.....	28,357	33,404	-44.4%	-48.0%	5,069	1.9%
403	Specialty trade contractors.....	47,734	55,172	-6.4%	-14.1%	4,853	3.0%
704	Building material and garden supply stores.....	28,648	32,918	-43.9%	-48.7%	4,522	9.7%
1401	Administrative and support services.....	27,409	32,201	-46.3%	-49.9%	3,775	1.5%
401	Construction of buildings.....	47,270	58,615	-7.4%	-8.7%	3,100	4.8%
402	Heavy and civil engineering construction.....	56,390	69,994	10.5%	9.0%	3,070	9.4%
805	Transit and ground passenger transportation.....	21,164	23,174	-58.5%	-63.9%	3,028	10.4%
1902	Personal and laundry services.....	23,514	26,385	-53.9%	-58.9%	2,265	3.6%
511	Wood product manufacturing.....	34,546	40,533	-32.3%	-36.9%	2,092	7.2%
1701	Performing arts and spectator sports.....	53,649	67,028	5.2%	4.4%	2,073	13.4%
1904	Private households.....	10,271	11,176	-79.9%	-82.6%	2,055	7.1%
708	Clothing and clothing accessories stores.....	19,186	20,158	-62.4%	-68.6%	1,669	2.8%
203	Support activities for mining.....	49,580	56,290	-2.8%	-12.4%	1,494	61.3%
1002	Credit intermediation and related activities.....	49,137	63,215	-3.7%	-1.6%	1,445	1.3%
808	Support activities for transportation.....	39,997	47,105	-21.6%	-26.7%	1,326	10.5%
1402	Waste management and remediation services....	44,943	53,045	-11.9%	-17.4%	1,294	8.7%
200	Mining.....	57,887	68,915	13.5%	7.3%	1,245	6.6%
701	Motor vehicle and parts dealers.....	39,218	42,898	-23.1%	-33.2%	1,232	1.5%
804	Truck transportation.....	44,866	55,771	-12.1%	-13.2%	789	1.3%
1901	Repair and maintenance.....	33,251	40,270	-34.8%	-37.3%	768	1.4%
1702	Museums, historical sites, zoos, and parks.....	27,007	31,498	-47.1%	-51.0%	625	12.2%
1801	Accommodation.....	22,034	26,024	-56.8%	-59.5%	509	1.0%
1101	Real estate.....	38,491	50,592	-24.6%	-21.2%	474	1.0%
1103	Lessors of nonfinancial intangible assets.....	54,456	92,283	6.7%	43.7%	293	28.4%
201	Oil and gas extraction.....	64,066	79,724	25.6%	24.1%	200	11.0%
807	Scenic and sightseeing transportation.....	18,294	25,937	-64.1%	-59.6%	154	23.0%
1000	Finance and insurance.....	63,579	84,174	24.6%	31.1%	112	0.0%
702	Furniture and home furnishings stores.....	30,747	33,951	-39.7%	-47.1%	100	0.5%
706	Health and personal care stores.....	26,365	33,159	-48.3%	-48.4%	99	0.2%
2001	Federal, civilian.....	72,798	91,254	42.7%	42.1%	-49	-0.0%
806	Pipeline transportation.....	77,287	92,485	51.5%	44.0%	-79	-4.2%
803	Water transportation.....	76,016	83,741	49.0%	30.4%	-182	-18.9%
907	Other information services.....	21,104	22,752	-58.6%	-64.6%	-193	-3.6%
711	General merchandise stores.....	18,152	21,420	-64.4%	-66.6%	-200	-0.2%
707	Gasoline stations.....	17,323	19,230	-66.0%	-70.1%	-241	-0.6%
101	Forestry and logging.....	23,527	29,064	-53.9%	-54.7%	-306	-24.1%
904	Internet publishing and broadcasting.....	76,793	86,709	50.5%	35.0%	-363	-45.6%
202	Mining (except oil and gas).....	58,514	70,905	14.7%	10.4%	-449	-3.1%
902	Motion picture and sound recording industries....	30,513	33,937	-40.2%	-47.2%	-540	-7.2%
1004	Insurance carriers and related activities.....	58,898	75,429	15.4%	17.4%	-612	-0.5%

Compensation Per Job in Pennsylvania; Replacing High Wage With Low Wage Jobs

Industries ranked by job growth: 2006/2001		Compensation Per Job		Compensation vs Mfging		Change in jobs: 2001-'06	
Code	Industries	2001	2006	2001	2006	Number	Percent
539	Petroleum and coal products manufacturing.....	71,907	111,493	40.9%	73.6%	-708	-9.6%
103	Agriculture and forestry support.....	23,459	27,577	-54.0%	-57.1%	-723	-8.4%
1003	Securities, commodity contracts, investments.....	123,526	157,076	142.1%	144.6%	-1,306	-4.7%
903	Broadcasting, except Internet.....	56,701	71,716	11.1%	11.7%	-1,318	-10.9%
100	Forestry, fishing, related activities.....	23,695	28,194	-53.6%	-56.1%	-1,444	-13.6%
703	Electronics and appliance stores.....	40,028	36,701	-21.5%	-42.9%	-1,714	-7.9%
1100	Real estate and rental and leasing.....	37,434	49,553	-26.6%	-22.8%	-2,269	-3.2%
536	Leather and allied product manufacturing.....	34,541	39,124	-32.3%	-39.1%	-2,669	-65.6%
1102	Rental and leasing services.....	34,813	44,815	-31.8%	-30.2%	-3,036	-12.1%
81	Farm wage and salary employment.....	21,964	24,022	-57.0%	-62.6%	-3,095	-13.7%
517	Electrical equipment/appliance manufacturing...	53,792	68,255	5.4%	6.3%	-3,150	-10.5%
709	Sporting goods, hobby, book and music stores...	18,517	19,824	-63.7%	-69.1%	-3,151	-11.0%
522	Miscellaneous manufacturing.....	48,948	70,189	-4.1%	9.3%	-3,349	-9.6%
2002	Military.....	22,289	43,164	-56.3%	-32.8%	-3,372	-7.6%
534	Textile product mills.....	34,581	40,467	-32.2%	-37.0%	-3,375	-38.1%
901	Publishing industries, except Internet.....	50,372	62,930	-1.3%	-2.0%	-3,450	-8.9%
521	Furniture and related product manufacturing.....	38,278	45,261	-25.0%	-29.5%	-3,456	-12.7%
712	Miscellaneous store retailers.....	20,073	23,188	-60.7%	-63.9%	-3,836	-8.9%
532	Beverage and tobacco product manufacturing...	51,745	70,654	1.4%	10.0%	-3,856	-35.8%
713	Nonstore retailers.....	38,772	55,351	-24.0%	-13.8%	-4,655	-14.9%
533	Textile mills.....	36,391	43,802	-28.7%	-31.8%	-5,372	-48.5%
537	Paper manufacturing.....	52,004	64,523	1.9%	0.5%	-6,037	-18.4%
542	Plastics and rubber products manufacturing.....	41,606	51,887	-18.5%	-19.2%	-6,082	-13.2%
531	Food manufacturing.....	42,844	52,276	-16.0%	-18.6%	-7,885	-10.2%
512	Nonmetallic mineral product manufacturing.....	51,091	61,438	0.1%	-4.3%	-7,992	-22.6%
538	Printing and related support activities.....	43,027	51,480	-15.7%	-19.8%	-8,166	-18.0%
705	Food and beverage stores.....	20,283	22,496	-60.2%	-65.0%	-8,401	-5.4%
906	ISPs, search portals, and data processing.....	73,599	73,808	44.3%	14.9%	-8,663	-40.2%
905	Telecommunications.....	64,734	82,744	26.9%	28.8%	-10,017	-21.2%
513	Primary metal manufacturing.....	58,699	76,203	15.0%	18.7%	-10,187	-19.0%
514	Fabricated metal product manufacturing.....	45,964	54,722	-9.9%	-14.8%	-10,655	-10.5%
801	Air transportation.....	68,826	67,478	34.9%	5.1%	-10,807	-43.6%
515	Machinery manufacturing.....	54,260	66,323	6.3%	3.3%	-11,942	-17.3%
535	Apparel manufacturing.....	30,401	40,527	-40.4%	-36.9%	-11,946	-49.6%
300	Utilities.....	83,604	125,029	63.9%	94.7%	-11,954	-36.2%
700	Retail trade.....	24,562	27,967	-51.9%	-56.5%	-14,576	-2.1%
541	Chemical manufacturing.....	81,486	109,078	59.7%	69.8%	-14,888	-24.0%
516	Computer/electronic product manufacturing.....	58,409	74,932	14.5%	16.7%	-23,331	-36.2%
900	Information.....	57,640	68,186	13.0%	6.2%	-24,544	-18.4%
530	Nondurable goods manufacturing.....	50,368	64,672	-1.3%	0.7%	-70,984	-21.5%
510	Durable goods manufacturing.....	51,458	63,943	0.9%	-0.4%	-76,463	-15.5%
500	Manufacturing.....	51,021	64,222	0.0%	0.0%	-147,447	-17.9%
518	Motor vehicles, bodies/trailers/parts mfging.....	N/A	59,289	N/A	-7.7%	N/A	N/A
519	Other transportation equipment manufacturing..	N/A	98,406	N/A	53.2%	N/A	N/A

US Department of Commerce and MBG Information Services

© CW McMillion/MBG Information Services

**The Following Data Tables are Based on
the US Department of Labor's monthly
"Current Employment Series"
with all revisions through March 11, 2008**

The Recent Jobs Record: Pennsylvania

Industry: Non-farm jobs: (1,000)	January of Each Year			Change: 2008/2007		Change: 2008/2001	
	2001	2007	2008	Thousands	Percent	Thousands	Percent
Total Nonfarm.....	5,613.1	5,679.4	5,709.5	30.1	0.5%	96.4	1.7%
Total Private.....	4,892.5	4,937.4	4,967.9	30.5	0.6%	75.4	1.5%
Goods Producing.....	1,096.3	921.6	907.6	-14.0	-1.5%	-188.7	-17.2%
Service-Providing.....	4,516.8	4,757.8	4,801.9	44.1	0.9%	285.1	6.3%
Private Service Providing.....	3,796.2	4,015.8	4,060.3	44.5	1.1%	264.1	7.0%
Natural Resources and Mining.....	18.6	19.9	20.5	0.6	3.0%	1.9	10.2%
Mining.....	17.5	19.2	19.9	0.7	3.6%	2.4	13.7%
Coal Mining.....	8.3	7.4	7.3	-0.1	-1.4%	-1.0	-12.0%
Construction.....	226.2	241.8	243.3	1.5	0.6%	17.1	7.6%
Construction of Buildings.....	57.1	60.0	58.6	-1.4	-2.3%	1.5	2.6%
Heavy and Civil Engineering Construction.....	24.4	28.6	29.7	1.1	3.8%	5.3	21.7%
Specialty Trade Contractors.....	144.7	153.2	155.0	1.8	1.2%	10.3	7.1%
Building Equipment Contractors.....	N/A	72.4	72.9	0.5	0.7%	N/A	N/A
Manufacturing.....	851.5	659.9	643.8	-16.1	-2.4%	-207.7	-24.4%
Durable Goods.....	515.7	408.9	399.5	-9.4	-2.3%	-116.2	-22.5%
Wood Product Manufacturing.....	28.1	28.3	27.1	-1.2	-4.2%	-1.0	-3.6%
Nonmetallic Mineral Product Manufacturing.....	35.7	26.3	25.0	-1.3	-4.9%	-10.7	-30.0%
Primary Metal Manufacturing.....	56.7	43.2	42.9	-0.3	-0.7%	-13.8	-24.3%
Iron, Steel Mills & Ferroalloy Manufacturing.....	18.5	13.9	14.3	0.4	2.9%	-4.2	-22.7%
Fabricated Metal Product Manufacturing.....	105.0	90.8	90.6	-0.2	-0.2%	-14.4	-13.7%
Machinery Manufacturing.....	73.3	57.2	56.3	-0.9	-1.6%	-17.0	-23.2%
Computer & Electronic Product Manufacturing.....	70.9	39.7	38.4	-1.3	-3.3%	-32.5	-45.8%
Electrical Equipment.....	31.8	26.9	26.6	-0.3	-1.1%	-5.2	-16.4%
Transportation Equipment Manufacturing.....	52.8	44.0	41.8	-2.2	-5.0%	-11.0	-20.8%
Furniture and Related Product Manufacturing.....	27.4	22.6	21.5	-1.1	-4.9%	-5.9	-21.5%
Miscellaneous Manufacturing.....	34.0	29.9	29.3	-0.6	-2.0%	-4.7	-13.8%
Non-Durable Goods.....	335.8	251.0	244.3	-6.7	-2.7%	-91.5	-27.2%
Food Manufacturing.....	76.9	68.8	67.6	-1.2	-1.7%	-9.3	-12.1%
Textile Mills.....	11.7	5.7	N/A	N/A	N/A	-6.0	-51.3%
Textile Product Mills.....	8.9	5.1	N/A	N/A	N/A	-3.8	-42.7%
Apparel Manufacturing.....	25.6	9.9	N/A	N/A	N/A	-15.7	-61.3%
Printing and Related Support Activities.....	45.2	35.8	34.9	-0.9	-2.5%	-10.3	-22.8%
Chemical Manufacturing.....	61.7	45.9	45.8	-0.1	-0.2%	-15.9	-25.8%
Pharmaceutical and Medicine Manufacturing.....	24.9	21.5	22.3	0.8	3.7%	-2.6	-10.4%
Plastics and Rubber Products Manufacturing.....	48.8	38.8	37.4	-1.4	-3.6%	-11.4	-23.4%
Trade, Transportation, and Utilities.....	1,129.5	1,130.9	1,129.3	-1.6	-0.1%	-0.2	-0.0%
Wholesale Trade.....	227.0	236.8	239.3	2.5	1.1%	12.3	5.4%
Merchant Wholesalers, Durable Goods.....	125.0	121.5	122.0	0.5	0.4%	-3.0	-2.4%
Merchant Wholesalers, Nondurable Goods.....	67.4	65.7	65.6	-0.1	-0.2%	-1.8	-2.7%
Wholesale Electronic Markets, Agents/Brokers..	34.6	49.6	51.7	2.1	4.2%	17.1	49.4%
Retail Trade.....	679.7	655.7	649.6	-6.1	-0.9%	-30.1	-4.4%
Motor Vehicle and Parts Dealers.....	76.3	77.0	75.4	-1.6	-2.1%	-0.9	-1.2%
Automobile Dealers.....	56.6	55.5	54.0	-1.5	-2.7%	-2.6	-4.6%
Furniture and Home Furnishings Stores.....	21.0	20.7	20.3	-0.4	-1.9%	-0.7	-3.3%
Electronics and Appliance Stores.....	22.1	19.2	18.4	-0.8	-4.2%	-3.7	-16.7%
Building Material & Garden Equip. Dealers.....	42.2	46.6	47.1	0.5	1.1%	4.9	11.6%
Food and Beverage Stores.....	152.0	141.9	142.2	0.3	0.2%	-9.8	-6.4%
Grocery Stores.....	132.9	125.8	126.8	1.0	0.8%	-6.1	-4.6%
Health and Personal Care Stores.....	49.0	47.7	47.4	-0.3	-0.6%	-1.6	-3.3%
Gasoline Stations.....	36.9	35.9	35.8	-0.1	-0.3%	-1.1	-3.0%
Clothing and Clothing Accessories Stores.....	59.6	62.1	61.6	-0.5	-0.8%	2.0	3.4%
Clothing Stores.....	N/A	46.4	47.1	0.7	1.5%	N/A	N/A
Sporting Goods.....	29.7	24.6	24.3	-0.3	-1.2%	-5.4	-18.2%
General Merchandise Stores.....	116.6	115.0	113.0	-2.0	-1.7%	-3.6	-3.1%
Department Stores.....	84.6	65.6	61.1	-4.5	-6.9%	-23.5	-27.8%
Miscellaneous Store Retailers.....	41.8	37.5	37.1	-0.4	-1.1%	-4.7	-11.2%
Nonstore Retailers.....	32.5	27.5	27.0	-0.5	-1.8%	-5.5	-16.9%
Transportation and Utilities.....	222.8	238.4	240.4	2.0	0.8%	17.6	7.9%
Utilities.....	25.4	20.9	21.2	0.3	1.4%	-4.2	-16.5%
Electric Power Generation.....	19.2	15.1	15.3	0.2	1.3%	-3.9	-20.3%
Transportation and Warehousing.....	197.4	217.5	219.2	1.7	0.8%	21.8	11.0%
Air Transportation.....	24.7	12.7	12.7	0.0	0.0%	-12.0	-48.6%
Rail Transportation.....	10.8	9.5	9.6	0.1	1.1%	-1.2	-11.1%
Truck Transportation.....	60.4	62.8	62.9	0.1	0.2%	2.5	4.1%
General Freight Trucking.....	N/A	45.8	45.2	-0.6	-1.3%	N/A	N/A
Transit & Ground Passenger Transportation....	29.0	32.5	32.3	-0.2	-0.6%	3.3	11.4%
Couriers and Messengers.....	28.3	27.9	27.8	-0.1	-0.4%	-0.5	-1.8%
Warehousing and Storage.....	28.4	55.2	56.7	1.5	2.7%	28.3	99.6%

The Recent Jobs Record: Pennsylvania

Industry: Non-farm jobs: (1,000)	January of Each Year			Change: 2008/2007		Change: 2008/2001	
	2001	2007	2008	Thousands	Percent	Thousands	Percent
Information	138.2	106.8	106.3	-0.5	-0.5%	-31.9	-23.1%
Publishing Industries (except Internet).....	39.8	35.3	35.1	-0.2	-0.6%	-4.7	-11.8%
Telecommunications.....	48.0	38.5	37.4	-1.1	-2.9%	-10.6	-22.1%
Financial Activities	339.4	330.4	328.9	-1.5	-0.5%	-10.5	-3.1%
Finance and Insurance.....	271.8	265.1	263.7	-1.4	-0.5%	-8.1	-3.0%
Credit Intermediation and Related Activities.....	110.9	109.1	105.7	-3.4	-3.1%	-5.2	-4.7%
Depository Credit Intermediation.....	88.4	83.0	82.3	-0.7	-0.8%	-6.1	-6.9%
Securities.....	27.2	26.6	27.7	1.1	4.1%	0.5	1.8%
Insurance Carriers and Related Activities.....	118.5	114.0	114.8	0.8	0.7%	-3.7	-3.1%
Funds.....	N/A	13.9	14.4	0.5	3.6%	N/A	N/A
Real Estate and Rental and Leasing.....	67.6	65.3	65.2	-0.1	-0.2%	-2.4	-3.6%
Real Estate.....	41.7	42.8	42.4	-0.4	-0.9%	0.7	1.7%
Professional and Business Services	603.7	679.9	695.7	15.8	2.3%	92.0	15.2%
Professional, Scientific and Technical Services....	283.0	309.2	316.2	7.0	2.3%	33.2	11.7%
Legal Services.....	48.5	53.5	53.8	0.3	0.6%	5.3	10.9%
Accounting.....	35.8	38.5	37.8	-0.7	-1.8%	2.0	5.6%
Architectural.....	52.3	54.1	55.9	1.8	3.3%	3.6	6.9%
Computer Systems Design & Related Services..	41.9	46.7	48.4	1.7	3.6%	6.5	15.5%
Management.....	39.2	39.8	41.3	1.5	3.8%	2.1	5.4%
Scientific Research & Development Services....	21.3	31.5	32.4	0.9	2.9%	11.1	52.1%
Management of Companies and Enterprises.....	55.9	106.3	107.6	1.3	1.2%	51.7	92.5%
Administrative Support & Waste Management.....	264.8	264.4	271.9	7.5	2.8%	7.1	2.7%
Administrative and Support Services.....	250.4	249.5	255.1	5.6	2.2%	4.7	1.9%
Employment Services.....	95.9	91.3	92.5	1.2	1.3%	-3.4	-3.5%
Business Support Services.....	38.6	34.9	34.3	-0.6	-1.7%	-4.3	-11.1%
Services to Buildings and Dwellings.....	55.5	61.2	64.9	3.7	6.0%	9.4	16.9%
Education and health services	917.5	1,052.3	1,075.4	23.1	2.2%	157.9	17.2%
Educational Services.....	186.5	208.8	214.0	5.2	2.5%	27.5	14.7%
Elementary and Secondary Schools.....	42.7	51.2	51.7	0.5	1.0%	9.0	21.1%
Colleges.....	122.4	132.5	136.0	3.5	2.6%	13.6	11.1%
Health Care and Social Assistance.....	731.0	843.5	861.4	17.9	2.1%	130.4	17.8%
Ambulatory Health Care Services.....	210.9	255.9	260.6	4.7	1.8%	49.7	23.6%
Offices of Physicians.....	86.3	102.6	104.5	1.9	1.9%	18.2	21.1%
Home Health Care Services.....	23.2	31.8	33.5	1.7	5.3%	10.3	44.4%
Hospitals.....	255.1	265.8	270.9	5.1	1.9%	15.8	6.2%
General Medical and Surgical Hospitals.....	233.2	238.8	243.2	4.4	1.8%	10.0	4.3%
Nursing and Residential Care Facilities.....	171.0	187.7	188.0	0.3	0.2%	17.0	9.9%
Residential Mental Retardation.....	39.2	45.3	45.4	0.1	0.2%	6.2	15.8%
Social Assistance.....	94.0	134.1	141.9	7.8	5.8%	47.9	51.0%
Child Day Care Services.....	32.1	38.1	40.0	1.9	5.0%	7.9	24.6%
Leisure and Hospitality	420.3	463.0	470.4	7.4	1.6%	50.1	11.9%
Arts.....	55.8	64.7	67.3	2.6	4.0%	11.5	20.6%
Amusement.....	38.9	43.8	45.4	1.6	3.7%	6.5	16.7%
Accommodation and Food Services.....	364.5	398.3	403.1	4.8	1.2%	38.6	10.6%
Accommodation.....	49.3	48.9	50.0	1.1	2.2%	0.7	1.4%
Food Services and Drinking Places.....	315.2	349.4	353.1	3.7	1.1%	37.9	12.0%
Full-Service Restaurants.....	152.1	174.5	174.0	-0.5	-0.3%	21.9	14.4%
Limited-Service Eating Places.....	112.8	124.8	129.0	4.2	3.4%	16.2	14.4%
Special Food Services.....	N/A	31.9	31.5	-0.4	-1.3%	N/A	N/A
Other Services	247.6	252.5	254.3	1.8	0.7%	6.7	2.7%
Repair and Maintenance.....	51.3	51.0	51.9	0.9	1.8%	0.6	1.2%
Personal and Laundry Services.....	56.4	58.3	58.9	0.6	1.0%	2.5	4.4%
Religious, Grantmaking, Civic, & Prof. Orgs	139.9	143.2	143.5	0.3	0.2%	3.6	2.6%
Government	720.6	742.0	741.6	-0.4	-0.1%	21.0	2.9%
Federal Government.....	108.4	104.0	104.8	0.8	0.8%	-3.6	-3.3%
Department of Defense.....	23.4	23.1	23.0	-0.1	-0.4%	-0.4	-1.7%
Postal Service.....	43.2	36.8	37.4	0.6	1.6%	-5.8	-13.4%
State Government.....	151.5	155.3	154.0	-1.3	-0.8%	2.5	1.7%
State Government educational services.....	49.6	51.1	51.1	0.0	0.0%	1.5	3.0%
Local Government.....	460.7	482.7	482.8	0.1	0.0%	22.1	4.8%
Local Government educational services.....	N/A	296.7	297.1	0.4	0.1%	N/A	N/A
Local Government non-educational services.....	N/A	186.0	185.7	-0.3	-0.2%	N/A	N/A

The Recent Jobs Record: Allentown-Bethlehem-Easton, PA-NJ

Industry: Non-farm jobs: (1,000)	January of Each Year			Change: 2008/2007		Change: 2008/2001	
	2001	2007	2008	Thousands	Percent	Thousands	Percent
Total Nonfarm.....	322.8	336.7	339.3	2.6	0.8%	16.5	5.1%
Total Private.....	284.9	295.2	296.6	1.4	0.5%	11.7	4.1%
Goods Producing.....	69.4	55.5	54.9	-0.6	-1.1%	-14.5	-20.9%
Service-Providing.....	253.4	281.2	284.4	3.2	1.1%	31.0	12.2%
Private Service Providing.....	215.5	239.7	241.7	2.0	0.8%	26.2	12.2%
Nat. Resources, Mining, & Construction.....	13.9	15.6	16.1	0.5	3.2%	2.2	15.8%
Manufacturing.....	55.5	39.9	38.8	-1.1	-2.8%	-16.7	-30.1%
Durable Goods.....	31.7	22.8	22.6	-0.2	-0.9%	-9.1	-28.7%
Non-Durable Goods.....	23.8	17.1	16.2	-0.9	-5.3%	-7.6	-31.9%
Trade/Transport/Utilities.....	62.5	70.3	68.8	-1.5	-2.1%	6.3	10.1%
Wholesale Trade.....	11.6	13.4	13.7	0.3	2.2%	2.1	18.1%
Retail Trade.....	38.6	41.5	40.1	-1.4	-3.4%	1.5	3.9%
Food and Beverage Stores.....	8.9	9.8	9.9	0.1	1.0%	1.0	11.2%
General Merchandise Stores.....	7.0	6.9	6.5	-0.4	-5.8%	-0.5	-7.1%
Department Stores.....	6.0	5.0	4.6	-0.4	-8.0%	-1.4	-23.3%
Transportation and Utilities.....	12.3	15.4	15.0	-0.4	-2.6%	2.7	22.0%
Transportation and Warehousing.....	11.3	14.3	13.8	-0.5	-3.5%	2.5	22.1%
Information.....	9.4	7.4	7.2	-0.2	-2.7%	-2.2	-23.4%
Financial Activities.....	16.9	16.3	16.2	-0.1	-0.6%	-0.7	-4.1%
Finance and Insurance.....	13.3	13.5	13.5	0.0	0.0%	0.2	1.5%
Insurance Carriers and Related Activities.....	8.1	7.4	7.6	0.2	2.7%	-0.5	-6.2%
Professional and Business Services.....	36.8	42.7	42.2	-0.5	-1.2%	5.4	14.7%
Professional and Technical Services.....	10.2	12.0	12.2	0.2	1.7%	2.0	19.6%
Management of Companies and Enterprises.....	9.1	10.6	10.1	-0.5	-4.7%	1.0	11.0%
Administrative and Support Services.....	17.5	20.1	19.9	-0.2	-1.0%	2.4	13.7%
Employment Services.....	6.8	8.0	7.7	-0.3	-3.8%	0.9	13.2%
Education and health services.....	50.5	60.6	63.3	2.7	4.5%	12.8	25.3%
Educational Services.....	9.6	10.2	11.0	0.8	7.8%	1.4	14.6%
Health Care and Social Assistance.....	40.9	50.4	52.3	1.9	3.8%	11.4	27.9%
Hospitals.....	13.3	16.6	17.7	1.1	6.6%	4.4	33.1%
Leisure and Hospitality.....	25.0	27.6	28.9	1.3	4.7%	3.9	15.6%
Accommodation and Food Services.....	20.3	23.9	24.2	0.3	1.3%	3.9	19.2%
Food Services and Drinking Places.....	17.8	21.6	21.9	0.3	1.4%	4.1	23.0%
Other Services.....	14.4	14.8	15.1	0.3	2.0%	0.7	4.9%
Government.....	37.9	41.5	42.7	1.2	2.9%	4.8	12.7%
Federal Government.....	3.2	2.5	2.6	0.1	4.0%	-0.6	-18.8%
State Government.....	3.0	3.3	3.3	0.0	0.0%	0.3	10.0%
Local Government.....	31.7	35.7	36.8	1.1	3.1%	5.1	16.1%
Local Government educational services.....	N/A	21.9	22.8	0.9	4.1%	N/A	N/A
Local Government, non-education.....	N/A	13.8	14.0	0.2	1.4%	N/A	N/A

© CW McMillion/MBG Information Services

US Department of Labor, BLS and MBG Information Services

The Recent Jobs Record: Altoona, PA

Industry: Non-farm jobs: (1,000)	January of Each Year			Change: 2008/2007		Change: 2008/2001	
	2001	2007	2008	Thousands	Percent	Thousands	Percent
Total Nonfarm.....	59.9	61.1	61.9	0.8	1.3%	2.0	3.3%
Total Private.....	51.2	52.5	53.2	0.7	1.3%	2.0	3.9%
Goods Producing.....	12.3	10.1	10.3	0.2	2.0%	-2.0	-16.3%
Service-Providing.....	47.6	51.0	51.6	0.6	1.2%	4.0	8.4%
Private Service Providing.....	38.9	42.4	42.9	0.5	1.2%	4.0	10.3%
Manufacturing.....	9.9	7.5	7.4	-0.1	-1.3%	-2.5	-25.3%
Trade/Transport/Utilities.....	15.0	16.2	16.1	-0.1	-0.6%	1.1	7.3%
Wholesale Trade.....	3.2	3.1	3.2	0.1	3.2%	0.0	0.0%
Retail Trade.....	8.4	9.1	8.8	-0.3	-3.3%	0.4	4.8%
Professional and Business Services.....	4.3	4.8	4.8	0.0	0.0%	0.5	11.6%
Education and health services.....	9.1	10.7	11.0	0.3	2.8%	1.9	20.9%
Leisure and Hospitality.....	4.6	5.0	5.4	0.4	8.0%	0.8	17.4%
Government.....	8.7	8.6	8.7	0.1	1.2%	0.0	0.0%
Federal Government.....	1.0	1.0	1.0	0.0	0.0%	0.0	0.0%
State Government.....	2.6	2.4	2.4	0.0	0.0%	-0.2	-7.7%
Local Government.....	5.1	5.2	5.3	0.1	1.9%	0.2	3.9%

© CW McMillion/MBG Information Services

US Department of Labor, BLS and MBG Information Services

The Recent Jobs Record: Erie, PA

Industry: Non-farm jobs: (1,000)	January of Each Year			Change: 2008/2007		Change: 2008/2001	
	2001	2007	2008	Thousands	Percent	Thousands	Percent
Total Nonfarm.....	133.2	130.4	131.7	1.3	1.0%	-1.5	-1.1%
Total Private.....	117.6	114.5	115.8	1.3	1.1%	-1.8	-1.5%
Goods Producing.....	36.8	28.7	28.1	-0.6	-2.1%	-8.7	-23.6%
Service-Providing.....	96.4	101.7	103.6	1.9	1.9%	7.2	7.5%
Private Service Providing.....	80.8	85.8	87.7	1.9	2.2%	6.9	8.5%
Nat. Resources, Mining, & Construction.....	4.2	4.1	4.4	0.3	7.3%	0.2	4.8%
Manufacturing.....	32.6	24.6	23.7	-0.9	-3.7%	-8.9	-27.3%
Plastics and Rubber Products Manufacturing.....	5.4	4.1	3.7	-0.4	-9.8%	-1.7	-31.5%
Trade/Transport/Utilities.....	22.8	22.3	22.1	-0.2	-0.9%	-0.7	-3.1%
Wholesale Trade.....	3.8	3.8	3.8	0.0	0.0%	0.0	0.0%
Retail Trade.....	16.4	15.6	15.3	-0.3	-1.9%	-1.1	-6.7%
Clothing and Clothing Accessories Stores.....	4.0	4.9	4.7	-0.2	-4.1%	0.7	17.5%
Transportation and Utilities.....	2.6	2.9	3.0	0.1	3.4%	0.4	15.4%
Information.....	2.7	2.2	2.1	-0.1	-4.5%	-0.6	-22.2%
Financial Activities.....	6.6	6.3	6.3	0.0	0.0%	-0.3	-4.5%
Professional and Business Services.....	11.1	11.7	11.8	0.1	0.9%	0.7	6.3%
Education and health services.....	21.3	25.9	26.5	0.6	2.3%	5.2	24.4%
Hospitals.....	4.9	5.8	5.7	-0.1	-1.7%	0.8	16.3%
Leisure and Hospitality.....	10.4	11.5	13.0	1.5	13.0%	2.6	25.0%
Other Services.....	5.9	5.9	5.9	0.0	0.0%	0.0	0.0%
Government.....	15.6	15.9	15.9	0.0	0.0%	0.3	1.9%
Federal Government.....	1.6	1.5	1.6	0.1	6.7%	0.0	0.0%
State Government.....	3.8	3.7	3.5	-0.2	-5.4%	-0.3	-7.9%
Local Government.....	10.2	10.7	10.8	0.1	0.9%	0.6	5.9%

© CW McMillion/MBG Information Services

US Department of Labor, BLS and MBG Information Services

The Recent Jobs Record: Harrisburg-Carlisle, PA

Industry: Non-farm jobs: (1,000)	January of Each Year			Change: 2008/2007		Change: 2008/2001	
	2001	2007	2008	Thousands	Percent	Thousands	Percent
Total Nonfarm.....	314.3	324.9	327.1	2.2	0.7%	12.8	4.1%
Total Private.....	254.1	262.8	265.2	2.4	0.9%	11.1	4.4%
Goods Producing.....	42.0	36.6	36.0	-0.6	-1.6%	-6.0	-14.3%
Service-Providing.....	272.3	288.3	291.1	2.8	1.0%	18.8	6.9%
Private Service Providing.....	212.1	226.2	229.2	3.0	1.3%	17.1	8.1%
Nat. Resources, Mining, & Construction.....	11.5	12.3	12.5	0.2	1.6%	1.0	8.7%
Manufacturing.....	30.5	24.3	23.5	-0.8	-3.3%	-7.0	-23.0%
Durable Goods.....	14.7	12.7	12.6	-0.1	-0.8%	-2.1	-14.3%
Non-Durable Goods.....	15.8	11.6	10.9	-0.7	-6.0%	-4.9	-31.0%
Food Manufacturing.....	7.4	5.9	5.3	-0.6	-10.2%	-2.1	-28.4%
Trade/Transport/Utilities.....	70.4	70.1	70.8	0.7	1.0%	0.4	0.6%
Wholesale Trade.....	14.2	14.0	14.2	0.2	1.4%	0.0	0.0%
Retail Trade.....	33.7	33.5	34.1	0.6	1.8%	0.4	1.2%
General Merchandise Stores.....	5.7	5.7	5.8	0.1	1.8%	0.1	1.8%
Transportation and Utilities.....	22.5	22.6	22.5	-0.1	-0.4%	0.0	0.0%
Transportation and Warehousing.....	20.8	21.7	21.9	0.2	0.9%	1.1	5.3%
Truck Transportation.....	9.7	8.5	8.5	0.0	0.0%	-1.2	-12.4%
Warehousing and Storage.....	5.4	7.9	7.7	-0.2	-2.5%	2.3	42.6%
Information.....	8.0	6.6	6.5	-0.1	-1.5%	-1.5	-18.8%
Financial Activities.....	23.9	24.3	24.5	0.2	0.8%	0.6	2.5%
Finance and Insurance.....	21.2	21.0	21.0	0.0	0.0%	-0.2	-0.9%
Professional and Business Services.....	32.2	38.0	38.6	0.6	1.6%	6.4	19.9%
Professional and Technical Services.....	13.2	15.9	16.2	0.3	1.9%	3.0	22.7%
Management of Companies and Enterprises.....	5.2	6.6	6.4	-0.2	-3.0%	1.2	23.1%
Administrative and Support Services.....	13.8	15.5	16.0	0.5	3.2%	2.2	15.9%
Employment Services.....	6.9	7.3	7.8	0.5	6.8%	0.9	13.0%
Education and health services.....	40.6	44.3	45.3	1.0	2.3%	4.7	11.6%
Educational Services.....	5.8	6.4	6.7	0.3	4.7%	0.9	15.5%
Health Care and Social Assistance.....	34.8	37.9	38.6	0.7	1.8%	3.8	10.9%
Hospitals.....	13.2	13.4	13.7	0.3	2.2%	0.5	3.8%
Leisure and Hospitality.....	21.6	26.6	27.1	0.5	1.9%	5.5	25.5%
Accommodation and Food Services.....	18.1	22.3	22.5	0.2	0.9%	4.4	24.3%
Food Services and Drinking Places.....	14.5	18.1	18.0	-0.1	-0.6%	3.5	24.1%
Other Services.....	15.4	16.3	16.4	0.1	0.6%	1.0	6.5%
Government.....	60.2	62.1	61.9	-0.2	-0.3%	1.7	2.8%
Federal Government.....	9.0	7.8	7.6	-0.2	-2.6%	-1.4	-15.6%
State Government.....	31.1	33.0	32.4	-0.6	-1.8%	1.3	4.2%
Local Government.....	20.1	21.3	21.9	0.6	2.8%	1.8	9.0%
Local Government educational services.....	N/A	14.0	14.5	0.5	3.6%	N/A	N/A
Local Government, non-education.....	N/A	7.3	7.4	0.1	1.4%	N/A	N/A

© CW McMillion/MBG Information Services

US Department of Labor, BLS and MBG Information Services

The Recent Jobs Record: Johnstown, PA

Industry: Non-farm jobs: (1,000)	January of Each Year			Change: 2008/2007		Change: 2008/2001	
	2001	2007	2008	Thousands	Percent	Thousands	Percent
Total Nonfarm.....	59.3	60.2	61.0	0.8	1.3%	1.7	2.9%
Total Private.....	49.2	50.2	51.1	0.9	1.8%	1.9	3.9%
Goods Producing.....	8.2	6.9	7.0	0.1	1.4%	-1.2	-14.6%
Service-Providing.....	51.1	53.3	54.0	0.7	1.3%	2.9	5.7%
Private Service Providing.....	41.0	43.3	44.1	0.8	1.8%	3.1	7.6%
Manufacturing.....	6.1	4.9	4.7	-0.2	-4.1%	-1.4	-23.0%
Trade, Transportation & Utilities.....	13.0	11.8	12.2	0.4	3.4%	-0.8	-6.2%
Retail Trade.....	8.5	7.3	7.3	0.0	0.0%	-1.2	-14.1%
Professional and Business Services.....	5.0	6.2	6.3	0.1	1.6%	1.3	26.0%
Education and health services.....	12.1	13.9	14.3	0.4	2.9%	2.2	18.2%
Leisure and Hospitality.....	4.5	4.5	4.6	0.1	2.2%	0.1	2.2%
Government.....	10.1	10.0	9.9	-0.1	-1.0%	-0.2	-2.0%
Federal Government.....	1.3	1.3	1.3	0.0	0.0%	0.0	0.0%
State Government.....	2.3	2.3	2.3	0.0	0.0%	0.0	0.0%
Local Government.....	6.5	6.4	6.3	-0.1	-1.6%	-0.2	-3.1%

© CW McMillion/MBG Information Services

US Department of Labor, BLS and MBG Information Services

The Recent Jobs Record: Lancaster, PA

Industry: Non-farm jobs: (1,000)	January of Each Year			Change: 2008/2007		Change: 2008/2001	
	2001	2007	2008	Thousands	Percent	Thousands	Percent
Total Nonfarm.....	221.1	232.4	235.0	2.6	1.1%	13.9	6.3%
Total Private.....	202.1	211.6	213.7	2.1	1.0%	11.6	5.7%
Goods Producing.....	68.3	59.4	58.3	-1.1	-1.9%	-10.0	-14.6%
Service-Providing.....	152.8	173.0	176.7	3.7	2.1%	23.9	15.6%
Private Service Providing.....	133.8	152.2	155.4	3.2	2.1%	21.6	16.1%
Nat. Resources, Mining, & Construction.....	14.0	16.6	16.9	0.3	1.8%	2.9	20.7%
Manufacturing.....	54.3	42.8	41.4	-1.4	-3.3%	-12.9	-23.8%
Durable Goods.....	27.2	22.7	21.8	-0.9	-4.0%	-5.4	-19.9%
Non-Durable Goods.....	27.1	20.1	19.6	-0.5	-2.5%	-7.5	-27.7%
Food Manufacturing.....	9.2	7.9	8.0	0.1	1.3%	-1.2	-13.0%
Trade, Transportation & Utilities.....	48.1	53.7	54.5	0.8	1.5%	6.4	13.3%
Wholesale Trade.....	11.0	13.6	13.8	0.2	1.5%	2.8	25.5%
Retail Trade.....	30.3	29.7	29.8	0.1	0.3%	-0.5	-1.7%
General Merchandise Stores.....	4.2	3.8	3.7	-0.1	-2.6%	-0.5	-11.9%
Transportation and Utilities.....	6.8	10.4	10.9	0.5	4.8%	4.1	60.3%
Information.....	4.1	3.8	3.9	0.1	2.6%	-0.2	-4.9%
Financial Activities.....	10.7	9.6	9.5	-0.1	-1.0%	-1.2	-11.2%
Professional and Business Services.....	17.7	20.1	20.5	0.4	2.0%	2.8	15.8%
Education and health services.....	26.1	35.4	36.3	0.9	2.5%	10.2	39.1%
Health Care and Social Assistance.....	23.4	31.1	31.9	0.8	2.6%	8.5	36.3%
Hospitals.....	6.1	7.0	7.4	0.4	5.7%	1.3	21.3%
Leisure and Hospitality.....	17.0	19.1	20.0	0.9	4.7%	3.0	17.6%
Accommodation and Food Services.....	14.8	16.2	16.7	0.5	3.1%	1.9	12.8%
Food Services and Drinking Places.....	11.9	13.6	13.8	0.2	1.5%	1.9	16.0%
Other Services.....	10.1	10.5	10.7	0.2	1.9%	0.6	5.9%
Government.....	19.0	20.8	21.3	0.5	2.4%	2.3	12.1%
Federal Government.....	1.6	1.6	1.6	0.0	0.0%	0.0	0.0%
State Government.....	2.6	2.9	3.0	0.1	3.4%	0.4	15.4%
Local Government.....	14.8	16.3	16.7	0.4	2.5%	1.9	12.8%

© CW McMillion/MBG Information Services

US Department of Labor, BLS and MBG Information Services

The Recent Jobs Record: the City of Philadelphia, PA

Industry: Non-farm jobs: (1,000)	January of Each Year			Change: 2008/2007		Change: 2008/2001	
	2001	2007	2008	Thousands	Percent	Thousands	Percent
Total Nonfarm.....	685.4	654.0	654.5	0.5	0.1%	-30.9	-4.5%
Total Private.....	568.5	547.7	550.6	2.9	0.5%	-17.9	-3.1%
Goods Producing.....	54.6	40.0	39.0	-1.0	-2.5%	-15.6	-28.6%
Service-Providing.....	630.8	614.0	615.5	1.5	0.2%	-15.3	-2.4%
Private Service Providing.....	513.9	507.7	511.6	3.9	0.8%	-2.3	-0.4%
Construction.....	13.1	11.2	11.3	0.1	0.9%	-1.8	-13.7%
Manufacturing.....	41.5	28.8	27.7	-1.1	-3.8%	-13.8	-33.3%
Trade, Transportation & Utilities.....	101.2	87.5	87.0	-0.5	-0.6%	-14.2	-14.0%
Wholesale Trade.....	20.9	17.3	17.2	-0.1	-0.6%	-3.7	-17.7%
Retail Trade.....	54.6	46.2	46.7	0.5	1.1%	-7.9	-14.5%
Transportation and Utilities.....	25.7	24.0	23.1	-0.9	-3.7%	-2.6	-10.1%
Information.....	17.1	12.5	13.2	0.7	5.6%	-3.9	-22.8%
Financial Activities.....	53.3	47.1	46.7	-0.4	-0.8%	-6.6	-12.4%
Finance and Insurance.....	43.3	37.3	36.5	-0.8	-2.1%	-6.8	-15.7%
Professional and Business Services.....	82.6	84.3	84.6	0.3	0.4%	2.0	2.4%
Professional and Technical Services.....	50.6	46.0	46.6	0.6	1.3%	-4.0	-7.9%
Legal Services.....	18.7	18.9	18.8	-0.1	-0.5%	0.1	0.5%
Administrative Support/Waste Management.....	26.5	24.7	24.3	-0.4	-1.6%	-2.2	-8.3%
Education and health services.....	175.8	192.4	195.8	3.4	1.8%	20.0	11.4%
Educational Services.....	59.3	64.2	64.9	0.7	1.1%	5.6	9.4%
Health Care and Social Assistance.....	116.5	128.2	130.9	2.7	2.1%	14.4	12.4%
Hospitals.....	55.5	57.3	58.0	0.7	1.2%	2.5	4.5%
Leisure and Hospitality.....	55.4	56.3	56.5	0.2	0.4%	1.1	2.0%
Accommodation and Food Services.....	46.9	46.3	46.0	-0.3	-0.6%	-0.9	-1.9%
Food Services and Drinking Places.....	39.6	38.1	38.4	0.3	0.8%	-1.2	-3.0%
Other Services.....	28.5	27.6	27.8	0.2	0.7%	-0.7	-2.5%
Government.....	116.9	106.3	103.9	-2.4	-2.3%	-13.0	-11.1%
Federal Government.....	36.1	32.2	32.3	0.1	0.3%	-3.8	-10.5%
State Government.....	11.3	11.0	10.9	-0.1	-0.9%	-0.4	-3.5%
Local Government.....	69.5	63.1	60.7	-2.4	-3.8%	-8.8	-12.7%

© CW McMillion/MBG Information Services

US Department of Labor, BLS and MBG Information Services

The Recent Jobs Record: Philadelphia, PA Metro

Industry: Non-farm jobs: (1,000)	January of Each Year			Change: 2008/2007		Change: 2008/2001	
	2001	2007	2008	Thousands	Percent	Thousands	Percent
Total Nonfarm.....	1,879.6	1,885.8	1,896.8	11.0	0.6%	17.2	0.9%
Total Private.....	1,662.3	1,670.5	1,681.0	10.5	0.6%	18.7	1.1%
Goods Producing.....	276.0	228.6	225.5	-3.1	-1.4%	-50.5	-18.3%
Service-Providing.....	1,603.6	1,657.2	1,671.3	14.1	0.9%	67.7	4.2%
Private Service Providing.....	1,386.3	1,441.9	1,455.5	13.6	0.9%	69.2	5.0%
Nat. Resources, Mining, & Construction.....	73.3	77.5	77.1	-0.4	-0.5%	3.8	5.2%
Specialty Trade Contractors.....	47.8	51.0	50.0	-1.0	-2.0%	2.2	4.6%
Manufacturing.....	202.7	151.1	148.4	-2.7	-1.8%	-54.3	-26.8%
Durable Goods.....	103.6	78.7	77.7	-1.0	-1.3%	-25.9	-25.0%
Transportation Equipment Manufacturing.....	16.6	14.5	14.4	-0.1	-0.7%	-2.2	-13.3%
Non-Durable Goods.....	99.1	72.4	70.7	-1.7	-2.3%	-28.4	-28.7%
Chemical Manufacturing.....	33.4	26.2	26.3	0.1	0.4%	-7.1	-21.3%
Pharmaceutical/Medicine Mfging.....	20.0	16.5	16.9	0.4	2.4%	-3.1	-15.5%
Trade/Transport/Utilities.....	356.3	342.6	344.2	1.6	0.5%	-12.1	-3.4%
Wholesale Trade.....	86.4	83.8	85.1	1.3	1.6%	-1.3	-1.5%
Retail Trade.....	209.0	198.5	198.9	0.4	0.2%	-10.1	-4.8%
Building Material/Garden Supplies Dealers.....	9.8	11.2	11.5	0.3	2.7%	1.7	17.3%
Food and Beverage Stores.....	46.8	45.6	46.0	0.4	0.9%	-0.8	-1.7%
Grocery Stores.....	41.0	40.7	40.8	0.1	0.2%	-0.2	-0.5%
Health and Personal Care Stores.....	16.9	16.9	16.5	-0.4	-2.4%	-0.4	-2.4%
Clothing and Clothing Accessories Stores.....	25.7	24.0	23.7	-0.3	-1.3%	-2.0	-7.8%
General Merchandise Stores.....	27.7	28.2	27.7	-0.5	-1.8%	0.0	0.0%
Department Stores.....	22.5	21.7	20.8	-0.9	-4.1%	-1.7	-7.6%
Transportation and Utilities.....	60.9	60.3	60.2	-0.1	-0.2%	-0.7	-1.1%
Transportation and Warehousing.....	54.4	55.9	56.4	0.5	0.9%	2.0	3.7%
Trucking.....	0.5	28.9	28.2	-0.7	-2.4%	27.7	N/A
Information.....	56.4	41.1	42.1	1.0	2.4%	-14.3	-25.4%
Telecommunications.....	17.5	13.9	14.5	0.6	4.3%	-3.0	-17.1%
Financial Activities.....	146.6	144.6	143.1	-1.5	-1.0%	-3.5	-2.4%
Finance and Insurance.....	118.2	116.2	114.8	-1.4	-1.2%	-3.4	-2.9%
Credit Intermediation and Related Activities.....	37.7	38.4	36.4	-2.0	-5.2%	-1.3	-3.4%
Depository Credit Intermediation.....	26.0	24.5	24.4	-0.1	-0.4%	-1.6	-6.2%
Insurance Carriers and Related Activities.....	52.5	47.5	47.4	-0.1	-0.2%	-5.1	-9.7%
Real Estate and Rental and Leasing.....	28.4	28.4	28.3	-0.1	-0.4%	-0.1	-0.4%
Professional and Business Services.....	269.7	293.6	298.9	5.3	1.8%	29.2	10.8%
Professional and Technical Services.....	141.2	155.2	158.5	3.3	2.1%	17.3	12.3%
Legal Services.....	25.8	27.2	27.1	-0.1	-0.4%	1.3	5.0%
Architectural.....	20.2	19.7	20.4	0.7	3.6%	0.2	1.0%
Computer Systems Design/Related Services.....	24.5	28.6	29.6	1.0	3.5%	5.1	20.8%
Scientific Research/Development Services.....	N/A	21.7	22.4	0.7	3.2%	N/A	N/A
Management of Companies and Enterprises.....	21.1	36.7	36.9	0.2	0.5%	15.8	74.9%
Administrative Support/Waste Management.....	107.4	101.7	103.5	1.8	1.8%	-3.9	-3.6%
Administrative and Support Services.....	102.7	97.2	99.0	1.8	1.9%	-3.7	-3.6%
Employment Services.....	34.8	30.3	30.6	0.3	1.0%	-4.2	-12.1%
Education and health services.....	353.8	392.8	397.5	4.7	1.2%	43.7	12.4%
Educational Services.....	91.2	103.7	103.4	-0.3	-0.3%	12.2	13.4%
Colleges.....	61.0	65.4	64.6	-0.8	-1.2%	3.6	5.9%
Health Care and Social Assistance.....	262.6	289.1	294.1	5.0	1.7%	31.5	12.0%
Ambulatory Health Care Services.....	74.5	85.3	86.1	0.8	0.9%	11.6	15.6%
Offices of Physicians.....	29.4	32.9	33.1	0.2	0.6%	3.7	12.6%
Hospitals.....	95.0	96.4	97.3	0.9	0.9%	2.3	2.4%
General Medical and Surgical Hospitals.....	82.6	80.5	80.8	0.3	0.4%	-1.8	-2.2%
Nursing and Residential Care Facilities.....	60.1	62.3	62.7	0.4	0.6%	2.6	4.3%
Residential Mental Retardation.....	16.1	17.3	17.2	-0.1	-0.6%	1.1	6.8%
Social Assistance.....	33.0	45.1	48.0	2.9	6.4%	15.0	45.5%
Leisure and Hospitality.....	124.6	144.1	145.9	1.8	1.2%	21.3	17.1%
Accommodation and Food Services.....	106.4	119.2	119.1	-0.1	-0.1%	12.7	11.9%
Food Services and Drinking Places.....	98.7	105.3	105.9	0.6	0.6%	7.2	7.3%
Full-Service Restaurants.....	42.8	51.8	51.9	0.1	0.2%	9.1	21.3%
Limited-Service Eating Places.....	32.0	34.8	36.1	1.3	3.7%	4.1	12.8%
Other Services.....	78.9	83.1	83.8	0.7	0.8%	4.9	6.2%
Government.....	217.3	215.3	215.8	0.5	0.2%	-1.5	-0.7%
Federal Government.....	46.2	41.9	41.9	0.0	0.0%	-4.3	-9.3%
State Government.....	22.5	22.5	22.6	0.1	0.4%	0.1	0.4%
Local Government.....	148.6	150.9	151.3	0.4	0.3%	2.7	1.8%
Local Government educational services.....	N/A	85.8	86.8	1.0	1.2%	N/A	N/A
Local Government, non-education.....	N/A	65.1	64.5	-0.6	-0.9%	N/A	N/A

© CW McMillion/MBG Information Services

US Department of Labor, BLS and MBG Information Services

The Recent Jobs Record: Pittsburgh, PA

Industry: Non-farm jobs: (1,000)	January of Each Year			Change: 2008/2007		Change: 2008/2001	
	2001	2007	2008	Thousands	Percent	Thousands	Percent
Total Nonfarm.....	1,137.9	1,120.1	1,127.7	7.6	0.7%	-10.2	-0.9%
Total Private.....	1,009.4	993.4	1,001.4	8.0	0.8%	-8.0	-0.8%
Goods Producing.....	185.0	155.7	156.0	0.3	0.2%	-29.0	-15.7%
Service-Providing.....	952.9	964.4	971.7	7.3	0.8%	18.8	2.0%
Private Service Providing.....	824.4	837.7	845.4	7.7	0.9%	21.0	2.5%
Natural Resources and Mining.....	N/A	4.8	4.7	-0.1	-2.1%	N/A	N/A
Construction.....	N/A	50.6	52.4	1.8	3.6%	N/A	N/A
Specialty Trade Contractors.....	N/A	30.5	31.6	1.1	3.6%	N/A	N/A
Manufacturing.....	127.9	100.3	98.9	-1.4	-1.4%	-29.0	-22.7%
Durable Goods.....	91.2	74.0	73.4	-0.6	-0.8%	-17.8	-19.5%
Primary Metal Manufacturing.....	18.6	14.3	14.2	-0.1	-0.7%	-4.4	-23.7%
Iron & Steel Mills & Ferroalloy Manufacturing..	10.3	7.3	7.3	0.0	0.0%	-3.0	-29.1%
Non-Durable Goods.....	36.7	26.3	25.5	-0.8	-3.0%	-11.2	-30.5%
Trade/Transport/Utilities.....	243.9	225.9	223.3	-2.6	-1.2%	-20.6	-8.4%
Wholesale Trade.....	46.7	49.1	49.3	0.2	0.4%	2.6	5.6%
Retail Trade.....	141.9	131.6	129.6	-2.0	-1.5%	-12.3	-8.7%
Building Material/Garden Supplies Dealers.....	8.1	8.2	8.6	0.4	4.9%	0.5	6.2%
Food and Beverage Stores.....	32.9	26.8	26.5	-0.3	-1.1%	-6.4	-19.5%
Clothing and Clothing Accessories Stores.....	11.6	13.1	12.7	-0.4	-3.1%	1.1	9.5%
General Merchandise Stores.....	26.7	25.5	24.3	-1.2	-4.7%	-2.4	-9.0%
Department Stores.....	17.7	14.5	13.4	-1.1	-7.6%	-4.3	-24.3%
Transportation and Utilities.....	55.3	45.2	44.4	-0.8	-1.8%	-10.9	-19.7%
Utilities.....	9.0	5.5	5.2	-0.3	-5.5%	-3.8	-42.2%
Transportation and Warehousing.....	46.3	39.7	39.2	-0.5	-1.3%	-7.1	-15.3%
Truck Transportation.....	19.4	22.7	22.3	-0.4	-1.8%	2.9	14.9%
Information.....	27.4	22.0	21.5	-0.5	-2.3%	-5.9	-21.5%
Financial Activities.....	67.5	67.6	68.0	0.4	0.6%	0.5	0.7%
Finance and Insurance.....	53.9	53.8	54.3	0.5	0.9%	0.4	0.7%
Credit Intermediation and Related Activities.....	28.2	27.5	27.0	-0.5	-1.8%	-1.2	-4.3%
Depository Credit Intermediation.....	24.0	22.5	22.3	-0.2	-0.9%	-1.7	-7.1%
Insurance Carriers and Related Activities.....	18.9	19.9	20.3	0.4	2.0%	1.4	7.4%
Professional and Business Services.....	138.5	148.0	152.0	4.0	2.7%	13.5	9.7%
Professional and Technical Services.....	68.1	67.7	68.6	0.9	1.3%	0.5	0.7%
Architectural.....	15.0	16.0	16.4	0.4	2.5%	1.4	9.3%
Scientific Research/Development Services.....	N/A	5.9	5.9	0.0	0.0%	N/A	N/A
Management of Companies and Enterprises.....	14.8	27.4	28.7	1.3	4.7%	13.9	93.9%
Administrative Support/Waste Management.....	55.6	52.9	54.7	1.8	3.4%	-0.9	-1.6%
Administrative and Support Services.....	52.3	49.8	53.6	3.8	7.6%	1.3	2.5%
Employment Services.....	17.5	16.4	17.6	1.2	7.3%	0.1	0.6%
Education and health services.....	199.2	222.6	227.9	5.3	2.4%	28.7	14.4%
Educational Services.....	45.7	47.3	49.6	2.3	4.9%	3.9	8.5%
Colleges.....	32.5	33.9	36.5	2.6	7.7%	4.0	12.3%
Health Care and Social Assistance.....	153.5	175.3	178.3	3.0	1.7%	24.8	16.2%
Ambulatory Health Care Services.....	46.3	56.5	57.6	1.1	1.9%	11.3	24.4%
Offices of Physicians.....	18.1	23.0	23.7	0.7	3.0%	5.6	30.9%
Hospitals.....	56.4	57.4	57.8	0.4	0.7%	1.4	2.5%
General Medical and Surgical Hospitals.....	51.6	52.4	52.9	0.5	1.0%	1.3	2.5%
Nursing and Residential Care Facilities.....	30.8	34.9	35.1	0.2	0.6%	4.3	14.0%
Social Assistance.....	20.0	26.5	27.8	1.3	4.9%	7.8	39.0%
Leisure and Hospitality.....	90.8	98.7	100.2	1.5	1.5%	9.4	10.4%
Accommodation and Food Services.....	79.0	86.0	86.6	0.6	0.7%	7.6	9.6%
Food Services and Drinking Places.....	70.8	78.2	78.5	0.3	0.4%	7.7	10.9%
Full-Service Restaurants.....	37.4	40.2	40.9	0.7	1.7%	3.5	9.4%
Limited-Service Eating Places.....	24.6	27.7	28.2	0.5	1.8%	3.6	14.6%
Other Services.....	57.1	52.9	52.5	-0.4	-0.8%	-4.6	-8.1%
Government.....	128.5	126.7	126.3	-0.4	-0.3%	-2.2	-1.7%
Federal Government.....	20.0	18.8	18.9	0.1	0.5%	-1.1	-5.5%
State Government.....	16.6	15.7	16.0	0.3	1.9%	-0.6	-3.6%
Local Government.....	91.9	92.2	91.4	-0.8	-0.9%	-0.5	-0.5%
Local Government educational services.....	N/A	56.1	55.9	-0.2	-0.4%	N/A	N/A
Local Government, non-education.....	N/A	36.1	35.5	-0.6	-1.7%	N/A	N/A

© CW McMillion/MBG Information Services

US Department of Labor, BLS and MBG Information Services

The Recent Jobs Record: Reading, PA

Industry: Non-farm jobs: (1,000)	January of Each Year			Change: 2008/2007		Change: 2008/2001	
	2001	2007	2008	Thousands	Percent	Thousands	Percent
Total Nonfarm.....	169.5	172.8	172.2	-0.6	-0.3%	2.7	1.6%
Total Private.....	150.0	150.0	149.3	-0.7	-0.5%	-0.7	-0.5%
Goods Producing.....	48.3	40.1	39.5	-0.6	-1.5%	-8.8	-18.2%
Service-Providing.....	121.2	132.7	132.7	0.0	0.0%	11.5	9.5%
Private Service Providing.....	101.7	109.9	109.8	-0.1	-0.1%	8.1	8.0%
Nat. Resources, Mining, & Construction.....	7.8	8.5	8.7	0.2	2.4%	0.9	11.5%
Manufacturing.....	40.5	31.6	30.8	-0.8	-2.5%	-9.7	-24.0%
Durable Goods.....	26.1	20.6	20.2	-0.4	-1.9%	-5.9	-22.6%
Non-Durable Goods.....	14.4	11.0	10.6	-0.4	-3.6%	-3.8	-26.4%
Trade, Transportation & Utilities.....	34.0	34.9	34.4	-0.5	-1.4%	0.4	1.2%
Wholesale Trade.....	6.3	7.2	7.2	0.0	0.0%	0.9	14.3%
Retail Trade.....	20.3	20.5	20.1	-0.4	-2.0%	-0.2	-1.0%
Clothing and Clothing Accessories Stores.....	6.3	5.8	5.8	0.0	0.0%	-0.5	-7.9%
Grocery Stores.....	3.3	3.6	3.6	0.0	0.0%	0.3	9.1%
Transportation and Utilities.....	7.4	7.2	7.1	-0.1	-1.4%	-0.3	-4.1%
Information.....	2.1	1.8	1.7	-0.1	-5.6%	-0.4	-19.0%
Financial Activities.....	8.7	8.1	8.0	-0.1	-1.2%	-0.7	-8.0%
Credit Intermediation and Related Activities.....	4.4	3.6	3.3	-0.3	-8.3%	-1.1	-25.0%
Professional and Business Services.....	18.8	19.6	19.8	0.2	1.0%	1.0	5.3%
Education and health services.....	19.0	24.4	24.8	0.4	1.6%	5.8	30.5%
Health Care and Social Assistance.....	17.0	21.9	22.1	0.2	0.9%	5.1	30.0%
Leisure and Hospitality.....	11.4	13.1	13.0	-0.1	-0.8%	1.6	14.0%
Other Services.....	7.7	8.0	8.1	0.1	1.3%	0.4	5.2%
Government.....	19.5	22.8	22.9	0.1	0.4%	3.4	17.4%
Federal Government.....	1.2	1.2	1.2	0.0	0.0%	0.0	0.0%
State Government.....	3.5	4.1	4.6	0.5	12.2%	1.1	31.4%
Local Government.....	14.8	17.5	17.1	-0.4	-2.3%	2.3	15.5%

US Department of Labor, BLS and MBG Information Services

© CW McMillion/MBG Information Services

The Recent Jobs Record: Scranton-Wilkes-Barre, PA

Industry: Non-farm jobs: (1,000)	January of Each Year			Change: 2008/2007		Change: 2008/2001	
	2001	2007	2008	Thousands	Percent	Thousands	Percent
Total Nonfarm.....	256.8	257.0	258.5	1.5	0.6%	1.7	0.7%
Total Private.....	226.0	225.4	226.8	1.4	0.6%	0.8	0.4%
Goods Producing.....	54.1	43.3	42.9	-0.4	-0.9%	-11.2	-20.7%
Service-Providing.....	202.7	213.7	215.6	1.9	0.9%	12.9	6.4%
Private Service Providing.....	171.9	182.1	183.9	1.8	1.0%	12.0	7.0%
Nat. Resources, Mining, & Construction.....	9.4	10.2	10.6	0.4	3.9%	1.2	12.8%
Manufacturing.....	44.7	33.1	32.3	-0.8	-2.4%	-12.4	-27.7%
Durable Goods.....	24.3	17.1	16.6	-0.5	-2.9%	-7.7	-31.7%
Non-Durable Goods.....	20.4	16.0	15.7	-0.3	-1.9%	-4.7	-23.0%
Trade, Transportation & Utilities.....	56.4	59.8	60.4	0.6	1.0%	4.0	7.1%
Wholesale Trade.....	9.5	12.3	12.3	0.0	0.0%	2.8	29.5%
Retail Trade.....	33.6	33.2	33.7	0.5	1.5%	0.1	0.3%
Grocery Stores.....	6.9	6.7	6.8	0.1	1.5%	-0.1	-1.4%
General Merchandise Stores.....	7.0	6.3	6.4	0.1	1.6%	-0.6	-8.6%
Transportation and Utilities.....	13.3	14.3	14.4	0.1	0.7%	1.1	8.3%
Information.....	6.9	6.2	5.9	-0.3	-4.8%	-1.0	-14.5%
Financial Activities.....	14.0	12.4	12.1	-0.3	-2.4%	-1.9	-13.6%
Professional and Business Services.....	22.9	23.6	24.2	0.6	2.5%	1.3	5.7%
Education and health services.....	43.8	48.8	49.9	1.1	2.3%	6.1	13.9%
Educational Services.....	7.8	8.1	8.4	0.3	3.7%	0.6	7.7%
Health Care and Social Assistance.....	36.0	40.7	41.5	0.8	2.0%	5.5	15.3%
Hospitals.....	10.9	11.0	11.1	0.1	0.9%	0.2	1.8%
Leisure and Hospitality.....	18.1	21.7	21.9	0.2	0.9%	3.8	21.0%
Accommodation and Food Services.....	16.4	19.2	19.4	0.2	1.0%	3.0	18.3%
Food Services and Drinking Places.....	14.7	16.9	17.2	0.3	1.8%	2.5	17.0%
Other Services.....	9.8	9.6	9.5	-0.1	-1.0%	-0.3	-3.1%
Government.....	30.8	31.6	31.7	0.1	0.3%	0.9	2.9%
Federal Government.....	4.4	4.6	4.6	0.0	0.0%	0.2	4.5%
State Government.....	6.6	6.6	6.6	0.0	0.0%	0.0	0.0%
Local Government.....	19.8	20.4	20.5	0.1	0.5%	0.7	3.5%
Local Government educational services.....	N/A	11.8	11.5	-0.3	-2.5%	N/A	N/A
Local Government, non-education.....	N/A	8.6	9.0	0.4	4.7%	N/A	N/A

US Department of Labor, BLS and MBG Information Services

© CW McMillion/MBG Information Services

The Recent Jobs Record: State College, PA

Industry: Non-farm jobs: (1,000)	January of Each Year			Change: 2008/2007		Change: 2008/2001	
	2001	2007	2008	Thousands	Percent	Thousands	Percent
Total Nonfarm.....	68.5	69.2	70.5	1.3	1.9%	2.0	2.9%
Total Private.....	42.4	42.3	43.1	0.8	1.9%	0.7	1.7%
Goods Producing.....	10.2	7.2	7.8	0.6	8.3%	-2.4	-23.5%
Service-Providing.....	58.3	62.0	62.7	0.7	1.1%	4.4	7.5%
Private Service Providing.....	32.2	35.1	35.3	0.2	0.6%	3.1	9.6%
Manufacturing.....	8.1	4.4	4.3	-0.1	-2.3%	-3.8	-46.9%
Trade, Transportation & Utilities.....	10.1	10.2	10.2	0.0	0.0%	0.1	1.0%
Retail Trade.....	7.4	7.7	7.7	0.0	0.0%	0.3	4.1%
Professional and Business Services.....	5.0	5.9	6.3	0.4	6.8%	1.3	26.0%
Education and health services.....	5.8	7.3	7.4	0.1	1.4%	1.6	27.6%
Leisure and Hospitality.....	5.8	6.0	6.4	0.4	6.7%	0.6	10.3%
Government.....	26.1	26.9	27.4	0.5	1.9%	1.3	5.0%
Federal Government.....	0.5	0.4	0.5	0.1	25.0%	0.0	0.0%
State Government.....	21.1	21.7	22.1	0.4	1.8%	1.0	4.7%
Local Government.....	4.5	4.8	4.8	0.0	0.0%	0.3	6.7%

© CW McMillion/MBG Information Services

US Department of Labor, BLS and MBG Information Services

The Recent Jobs Record: Williamsport, PA

Industry: Non-farm jobs: (1,000)	January of Each Year			Change: 2008/2007		Change: 2008/2001	
	2001	2007	2008	Thousands	Percent	Thousands	Percent
Total Nonfarm.....	54.8	52.9	52.5	-0.4	-0.8%	-2.3	-4.2%
Total Private.....	47.7	45.4	44.8	-0.6	-1.3%	-2.9	-6.1%
Goods Producing.....	15.6	12.4	12.1	-0.3	-2.4%	-3.5	-22.4%
Service-Providing.....	39.2	40.5	40.4	-0.1	-0.2%	1.2	3.1%
Private Service Providing.....	32.1	33.0	32.7	-0.3	-0.9%	0.6	1.9%
Manufacturing.....	13.6	10.3	10.1	-0.2	-1.9%	-3.5	-25.7%
Trade, Transportation & Utilities.....	11.8	11.0	10.9	-0.1	-0.9%	-0.9	-7.6%
Retail Trade.....	8.8	6.9	6.7	-0.2	-2.9%	-2.1	-23.9%
Education and health services.....	7.8	9.2	9.2	0.0	0.0%	1.4	17.9%
Leisure and Hospitality.....	3.8	3.8	3.9	0.1	2.6%	0.1	2.6%
Government.....	7.1	7.5	7.7	0.2	2.7%	0.6	8.5%
Federal Government.....	0.6	0.5	0.5	0.0	0.0%	-0.1	-16.7%
State Government.....	2.3	2.8	2.7	-0.1	-3.6%	0.4	17.4%
Local Government.....	4.2	4.2	4.5	0.3	7.1%	0.3	7.1%

© CW McMillion/MBG Information Services

US Department of Labor, BLS and MBG Information Services

The Recent Jobs Record: York-Hanover, PA

Industry: Non-farm jobs: (1,000)	January of Each Year			Change: 2008/2007		Change: 2008/2001	
	2001	2007	2008	Thousands	Percent	Thousands	Percent
Total Nonfarm.....	171.2	180.1	182.2	2.1	1.2%	11.0	6.4%
Total Private.....	154.1	159.5	161.4	1.9	1.2%	7.3	4.7%
Goods Producing.....	54.9	49.4	49.8	0.4	0.8%	-5.1	-9.3%
Service-Providing.....	116.3	130.7	132.4	1.7	1.3%	16.1	13.8%
Private Service Providing.....	99.2	110.1	111.6	1.5	1.4%	12.4	12.5%
Nat. Resources, Mining, & Construction.....	9.5	11.9	12.5	0.6	5.0%	3.0	31.6%
Manufacturing.....	45.4	37.5	37.3	-0.2	-0.5%	-8.1	-17.8%
Trade, Transportation & Utilities.....	36.5	39.2	38.7	-0.5	-1.3%	2.2	6.0%
Wholesale Trade.....	6.4	6.9	6.9	0.0	0.0%	0.5	7.8%
Retail Trade.....	22.6	22.8	22.4	-0.4	-1.8%	-0.2	-0.9%
Grocery Stores.....	N/A	4.1	4.2	0.1	2.4%	N/A	N/A
General Merchandise Stores.....	5.2	4.8	4.7	-0.1	-2.1%	-0.5	-9.6%
Transportation and Utilities.....	7.5	9.5	9.4	-0.1	-1.1%	1.9	25.3%
Information.....	2.6	2.0	2.2	0.2	10.0%	-0.4	-15.4%
Financial Activities.....	5.4	6.1	6.1	0.0	0.0%	0.7	13.0%
Professional and Business Services.....	15.6	16.6	17.4	0.8	4.8%	1.8	11.5%
Education and health services.....	18.6	22.8	23.4	0.6	2.6%	4.8	25.8%
Health Care and Social Assistance.....	17.1	20.7	21.5	0.8	3.9%	4.4	25.7%
Leisure and Hospitality.....	13.0	14.4	14.9	0.5	3.5%	1.9	14.6%
Other Services.....	7.5	9.0	8.9	-0.1	-1.1%	1.4	18.7%
Government.....	17.1	20.6	20.8	0.2	1.0%	3.7	21.6%
Federal Government.....	3.7	4.5	4.4	-0.1	-2.2%	0.7	18.9%
State Government.....	1.0	1.1	1.1	0.0	0.0%	0.1	10.0%
Local Government.....	12.4	15.0	15.3	0.3	2.0%	2.9	23.4%

© CW McMillion/MBG Information Services

US Department of Labor, BLS and MBG Information Services

Definitions of Pennsylvania Metropolitan Statistical Areas (MSAs)

Allentown-Bethlehem-Easton, PA-NJ: Principal Cities; Allentown, PA; Bethlehem, PA
Warren County, NJ; Carbon County, PA; Lehigh County, PA; Northampton County, PA

Altoona, PA: Principal City; Altoona
Blair County

Erie, PA: Principal City; Erie
Erie County

Harrisburg-Carlisle, PA: Principal Cities; Harrisburg, Carlisle
Cumberland County, Dauphin County, Perry County

Johnstown, PA: Principal City; Johnstown
Cambria County

Lancaster, PA: Principal City; Lancaster
Lancaster County

Philadelphia, PA Metropolitan Division: Principal City; Philadelphia
Bucks County, Chester County, Delaware County, Montgomery County, Philadelphia County

Pittsburgh, PA: Principal City; Pittsburgh
Allegheny County, Armstrong County, Beaver County, Butler County, Fayette County, Washington
County, Westmoreland County

Reading, PA: Principal City; Reading
Berks County

Scranton-Wilkes-Barre, PA: Principal Cities; Scranton, Wilkes-Barre
Lackawanna County, Luzerne County, Wyoming County

State College, PA: Principal City; State College
Centre County

Williamsport, PA: Principal City; Williamsport
Lycoming County

York-Hanover, PA: Principal Cities; York, Hanover
York County